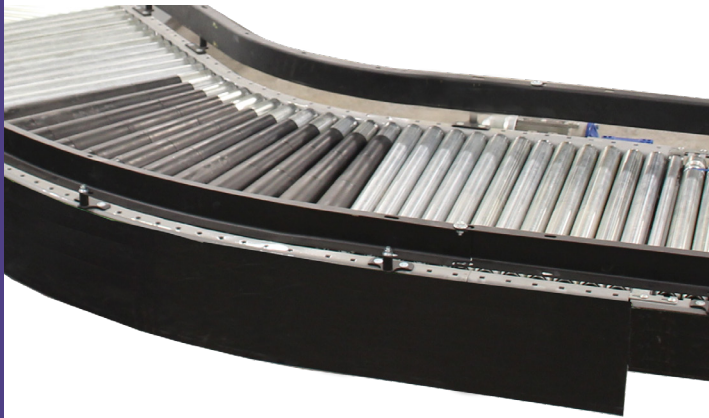


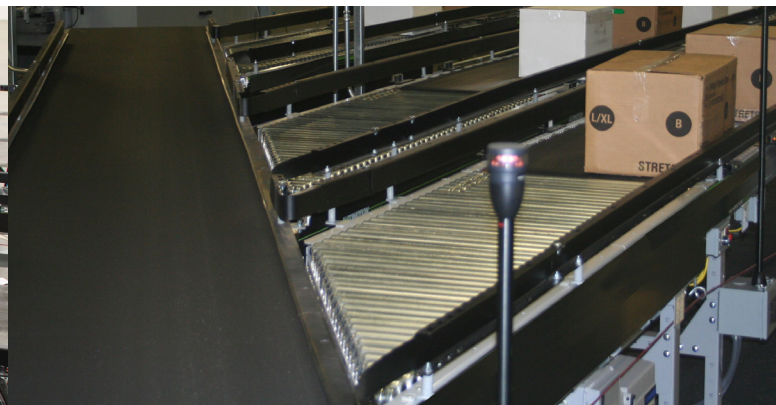
CVB V-Belt Live Roller Conveyor



Automation's Model CVB V-Belt driven conveyor incorporate a modular bolt together design enabling numerous job specific assemblies to be configured from a handful of standard modular components. These motor driven or slave driven units are available in a full array of curve, straight and junction configurations to satisfy your specific curve, merge, or divert layout requirements.

Automation's standard curve offering features true taper rollers in the arced section of the curve so cartons negotiate turns smoothly and quietly without changing carton orientation.

Automation's V-Belt Live Roller Conveyor was designed with ease-of-maintenance in mind. In addition to durable galvanized rollers, these economical and easy-to-install units feature specially designed snub driveshafts allowing belts to be replaced without disassembling the conveyor.



Mechanical Characteristics

Bed Section

10" Deep x 12 Gauge CSC frame.

Galvanized Rollers

Carrying: 1-7/8" Diameter, 16 Gauge carrying roller with 7/16" hex axle.

Tapered Carrying: 1-7/8" Diameter (small end), tapered carrying roller with 7/16" hex axle.

Drives

Slave driven module or motor driven module with belt take-up. 3/4 HP to 1-1/2 HP. Speed range is 70-600 FPM.

Belt

"B" Section V-Belt.

Axle Isolators

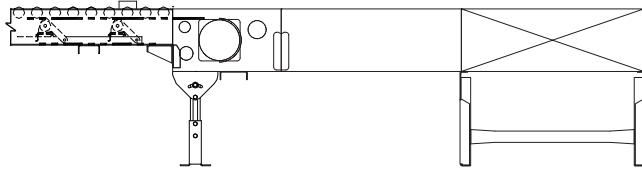
Specially designed conductive plastic insert isolates carrying roller axles from the conveyor frame to reduce noise and prevent wear.

Finish

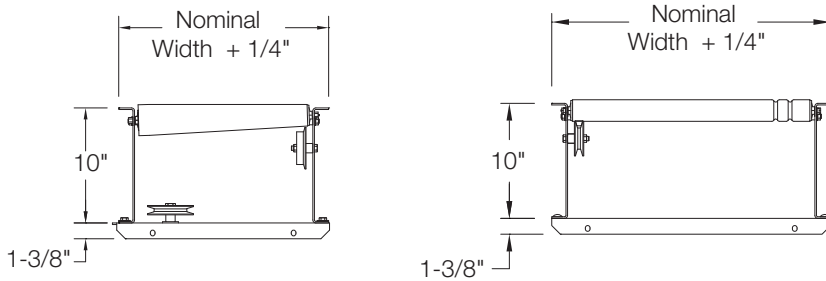
Light gray powder coat paint. Black side cover.

Technical Detail

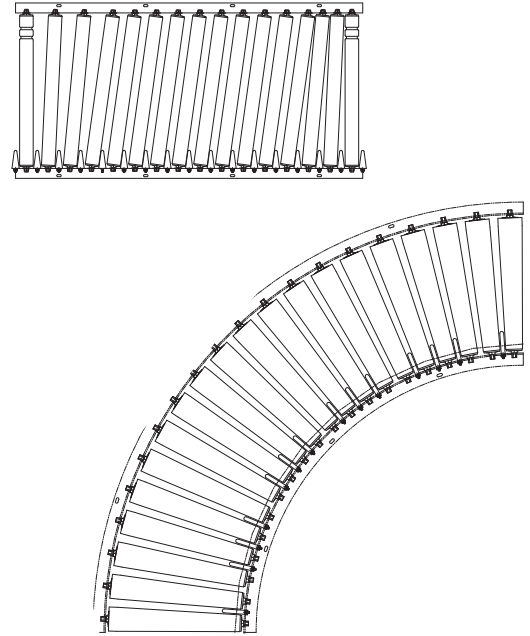
Elevation View



Section View



Plan View



Specifications

Typical Applications

- Transportation
- Transfer (junctions for merge and divert applications).
- Alignment

Live Load Capacity

Up to 100 lbs/ft. depending on width, roller centers, supports, etc.

Standard Curve Offering

30°, 45°, 60°, 90°, and 180°

Tight Radius Curve Offering

90° and 180°

Standard Junction Offering

30° and 45°

Standard Nominal Widths

18", 24", 30", 36" and 42"

Tight Radius Nominal Widths

18", 24", and 30"
(Inside Radius 13-1/2")

Carrying Roller Centers

2" and 3"

Standard Features

Pulley guards and covers.
Bolt-on top guard rail 3", 6", and 12" high. Powder coat paint color flat black.
Guard rail system provides nominal width between guard rails.

Options

Guard Rails and Supports.
Slave or Motorized Drive.
Five standard optional powder coat paint colors. Special colors available.

Best Industry Warranty Conveyor/Sortation



At Wynright, we stand behind the quality of our work. We proudly extend our parts only conveyor and sortation warranty to two years at no additional cost. We understand our client's need to mitigate risk, especially when it comes to a malfunctioning product that prevents them from meeting the needs of their customers. As such, we will replace or repair any part or piece of equipment proving defective in material or workmanship for up to two years.

Our warranty is a statement of promise that ensures the quality of our product and it's performance. It is a testament to the full confidence we have in our product offering.

Our warranty clearly states the conditions of the warranty as well as who to contact for any repairs or replacement parts, whether they are third party or of our own manufacture.



- Two years from last major shipment plus 30 days!
- Easy replacement part ordering!
- Free outbound and return shipping within 2 weeks!



1 Order replacements online at www.wynparts.com or directly with Wynparts at 844.202.3957

2 Complete the included RMA information provided with the replacement items

3 Return the defective item with RMA information within 2-weeks for free return shipping

As easy as



Warranty (Effective January 1, 2018)

The Company warrants that equipment furnished, and the material used in its manufacturing, shall be free from manufacturing defects.

The Company's obligation under this parts-only warranty is for TWO YEARS from FINAL SHIPMENT - PLUS 30 DAYS, provided the Integrator provides notice in writing, and examination proves the claim that such materials or parts were defective when furnished.

The Company will replace or repair any part or equipment proving defective in material or workmanship. Assessment of warrantable defect will be verified by the Company, upon receipt of part (see Return Procedure below).

The Company will incur the cost for outbound shipment of the replacement part(s), via standard ground transportation. If the Integrator prefers or requires expedited freight, then the Integrator will be responsible for the entire outbound freight cost. The Company will also incur the cost for the return ground freight of defective parts if the Integrator returns the part within 2 weeks of receipt of the replacement part(s). Outside of 2 weeks, the shipping costs will be incurred by the Integrator. This freight policy only covers parts shipping to/from the continental U.S.

Deterioration of equipment due to normal wear and tear, abuse, overloading, maintenance neglect, exposure to corrosive or abrasive materials, misapplication, or excessive dampness shall not be deemed attributable to defectiveness of material or workmanship. Any modification to equipment without the Company's knowledge and consent voids this warranty.

The Company shall not be liable for loss of profits, delays or expenses incurred by failure of said parts, whether incidental or consequential. Consequential damages of any sort are wholly excluded.

The liability of the Company will be limited to the replacement cost of any defective part. All installation costs relative to any warranted part will be at the expense of the Integrator. Parts replaced under this warranty are subject to the same 2-year term as the original equipment.

If a Company/factory service representative is required for additional assistance, contact your Customer Service Project Coordinator. Labor will be charged at the prevailing rate, plus travel expenses.

Component parts not of our manufacture (such as motors, reduction units, electrical units, pneumatic controls, air cylinders) will be covered by the OEM's warranty. In case of failure during the warranty period, contact your Automation® Customer Service representative or the nearest authorized service representative of the manufacturer.

Warranty Return Procedure:

- 1) Integrator must provide a purchase order. A replacement part will be sent, and the Company will issue an invoice for the replacement part.
- 2) The replacement shipment will include a Return Material Authorization (RMA). This RMA is valid for 60 days.
- 3) The RMA form must be completed and returned with the defective item. (See above. The Company will incur the cost for ground transportation if returned within 2 weeks.)
- 4) To receive credit consideration, the part must be returned to the Company within 60 days of receipt of the replacement part and the return part must be tagged with the RMA number and include the completed RMA form. Upon receipt, inspection and confirmation of warrantable defect, a credit will be issued.
- 5) No credit can be given for parts received after 60 days.
- 6) Only those parts specifically itemized on the RMA will be accepted for return.

If you have any questions regarding this Warranty Policy, please contact your Customer Service Project Coordinator.