

# 7 & 11 NIGHT FIJI LAU & KADAVU DISCOVERY CRUISES

## OUR CRUISES INCLUDE:



All meals



Daily snorkel,  
kayak, SUP



Local food  
& culture



Island tours  
& hikes



Entertainment



24/7 coffee &  
tea facilities



Kids Club inc  
early dinner  
(5-9yrs)



Boat & bus  
transfers

## ADDITIONAL FEATURES:

- Most twice daily excursions included
- Freshwater swimming pool
- Choice of 4 accommodation levels
- Day Spa (massage & beauty ) optional
- Scuba Diving (Padi 5 star) daily—optional
- Mini-gym & audio visual room/library
- Easy access small boat launching platform
- Interconnecting family staterooms and family quad cabins
- Resident marine biologist cultural & marine presentations

**FARES EXCLUDE:** Transfers to the ship, drinks, optional tours , scuba diving & services.

For bookings please contact your travel agent or

Phone: +61 9126 8160 OR +679 670 1823

Email: [fiji@captaincookcruisesfiji.com](mailto:fiji@captaincookcruisesfiji.com)

Website: [www.captaincookcruisesfiji.com](http://www.captaincookcruisesfiji.com)

**CONDITIONS:** Valid for sale & travel from 1Apr21 to 31Mar24 excl special events. Prices are AUD twin share & are inclusive of Value Added Tax (VAT) of 15% (as at Apr22). Early Booking discounts available on adult fares only. Prices may be subject to change due to fuel price & currency fluctuations. Limited Availability – a select number of seats/rooms have been set aside for this promotion. Once these rooms have been sold prices revert to normal Brochure Fares. Valid on new bookings only. Infants under 5yrs are not accepted. Conditions apply.



FIJI'S CRUISE LINE

## 7 NIGHT LAU DISCOVERY CRUISE

Check-in at midday & boarding by 1pm.

Departing 2022 - 10 Sept, 24 Sept

2023 - 14 Jan, 20 May, 9 Sept, 18 Nov & 2024 - 20 Jan

AUD\$	"D" Porthole Cabin Twin/Dbl/Bunk	"C" Ocean Stateroom Twin/Double	"B" Ocean Stateroom Twin/Double	"A" Tabua Suite Twin/Double
Double/Twin Share pp	3763	4520	4984	6250
Sole Occupancy pp	4701	5650	6225	9367
Bunk Triple/Quad Share pp	3007	N/A	N/A	N/A
Child 5-17yrs sharing with adult pp	1190	1412	1482	6250
Separate child's room (max 2 in Stateroom /4 in Cabin)	4701	2824	2964	

## 11 NIGHT LAU DISCOVERY CRUISE

Check-in at midday & boarding by 1pm.

Departing 2022-Tues 25 Oct

2023 - 21 Mar, 25 Oct, 21 Mar, 24 Oct & 2024 - 19 Mar

AUD\$	"D" Porthole Cabin Twin/Dbl/Bunk	"C" Ocean Stateroom Twin/Double	"B" Ocean Stateroom Twin/Double	"A" Tabua Suite Twin/Double
Double/Twin Share pp	6174	7470	8232	10320
Sole Occupancy pp	7829	9337	10300	15485
Bunk Triple/Quad Share pp	5004	N/A	N/A	N/A
Child 5-17yrs sharing with adult pp	1957	4489	5043	10320
Separate child's room (max 2 in Stateroom /4 in Cabin)	7829	8978	10086	

Early Booking Discounts are available on adult fares!

## 11 NIGHT LAU & KADAVU DISCOVERY CRUISE ITINERARY

**TUESDAY:** Set sail on your Lau Discovery cruise. After boarding there will be a full briefing from your guide before an afternoon of beach activities at Tivua Island. Later in the evening, enjoy a wonderful Welcome dinner as you cruise into a south pacific sunset.

**WEDNESDAY:** Start your day at Makogai Island with a traditional Fijian ceremony before joining the 1 hour walking tour of Makogai leper colony and clam research station. There will be an opportunity in the afternoon to return to the island visiting the local primary school children who will entertain you with their song and dance.

**THURSDAY:** Explore a beautiful beach on the rugged southern coastline of Taveuni, take a hike to a spectacular waterfall and fresh water pool and enjoy a picnic lunch ashore and a chat to the locals.

**FRIDAY:** We reach the most northern island of Lau—Wailagilala. See the remains of a disused lighthouse, or explore the abundant fish life whilst snorkelling.

**SATURDAY:** Qilaqila, at the northwest end of Vanuabalavu, is known for its pristine waters, limestone caves and mushroom shaped islands. This is also known as the Bay of Islands and is famous for its amazing scenery and pristine reefs.

**SUNDAY:** We will arrive at Oneata where the local people will welcome us at their Methodist Tongan Church for Sunday service. The harmonies of the Oneata choir will inspire you.

**MONDAY:** The ship has an early start today to cruise to Fulaga Island. Both are extinct volcano craters and known for their crystal lagoons and amazing corals. This afternoon we arrive at one of the Yagasa Islands, for snorkelling, swimming, coral viewing or kayaking.

**TUESDAY:** Explore uninhabited Vuaqava and its central lake known for turtles, snakes & amazing bird life. This is a sacred island for the Fijian culture and there will be an island walk to explore these relics. Please be warned that a reasonable level of fitness will be required as the return walk is approximately 3 hours and quite difficult to negotiate.

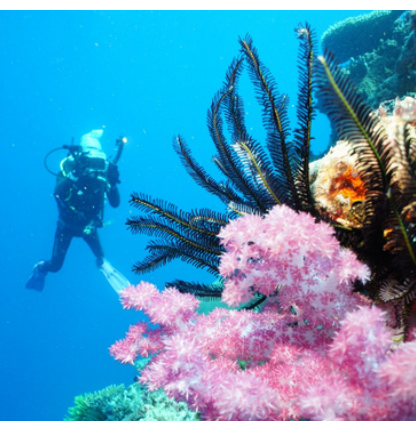
**WEDNESDAY:** Be welcomed & entertained by the people of Naikeleyaga Village on the island of Kabara known for their wood turning and Tongan heritage. Experience a traditional Meke, Sevusevu & lovo quite different from the traditional Fijian.

**THURSDAY:** Horse-shoe shaped Totoya Island is our destination today. We will visit a local school and the children will surprise you with their entertainment and show you their work. We will also have the opportunity to explore their reefs.

**FRIDAY:** We arrive in Kadavu and head to the Village of Nalotu for a welcome Sevusevu, then a tour of the village where you can witness the making of traditional fishing traps and pottery. The women of Nalotu village still make clay pottery in the time-honoured tradition that is rarely seen in Fiji anymore. This evening don your sulu (sarong) and join all the celebrations of our Pacific Island Night Finale.

**SATURDAY:** Disembark at Port Denarau feeling refreshed. Most days will offer the opportunity to snorkel, swim and Scuba Dive the pristine waters of the beautiful Lau group the pristine waters of the beautiful Lau group.

\*All itineraries are subject to change due to weather, operational requirements, pandemics, government directives or acts of God.





## 7 NIGHT LAU & KADAVU DISCOVERY CRUISE ITINERARY

**SATURDAY:** Set sail on your Lau Discovery cruise over a light welcome lunch. After boarding there will be a full safety briefing from your Captain while we sail to our private island of Tivua, a great place to refresh your snorkelling skills. Later in the evening, enjoy a wonderful Welcome dinner as you cruise into a south pacific sunset.

**SUNDAY:** Start your day at Makogai Island with a traditional Fijian ceremony before joining the 1 hour walking tour of Makogai leper colony and clam research station. The people of this remote village welcome us for church

**MONDAY:** Qilaqila, at the northwest end of Vanuabalavu, is known for its pristine waters, limestone caves and mushroom shaped islands. This is also known as the Bay of Islands and is famous for its amazing scenery and pristine reefs.

**TUESDAY:** We arrive at Fulaga Island this morning. Both are extinct volcano craters and known for their crystal lagoons and amazing corals. This afternoon we arrive at one of the Yagasa Islands, for snorkeling, swimming, coral viewing or kayaking.

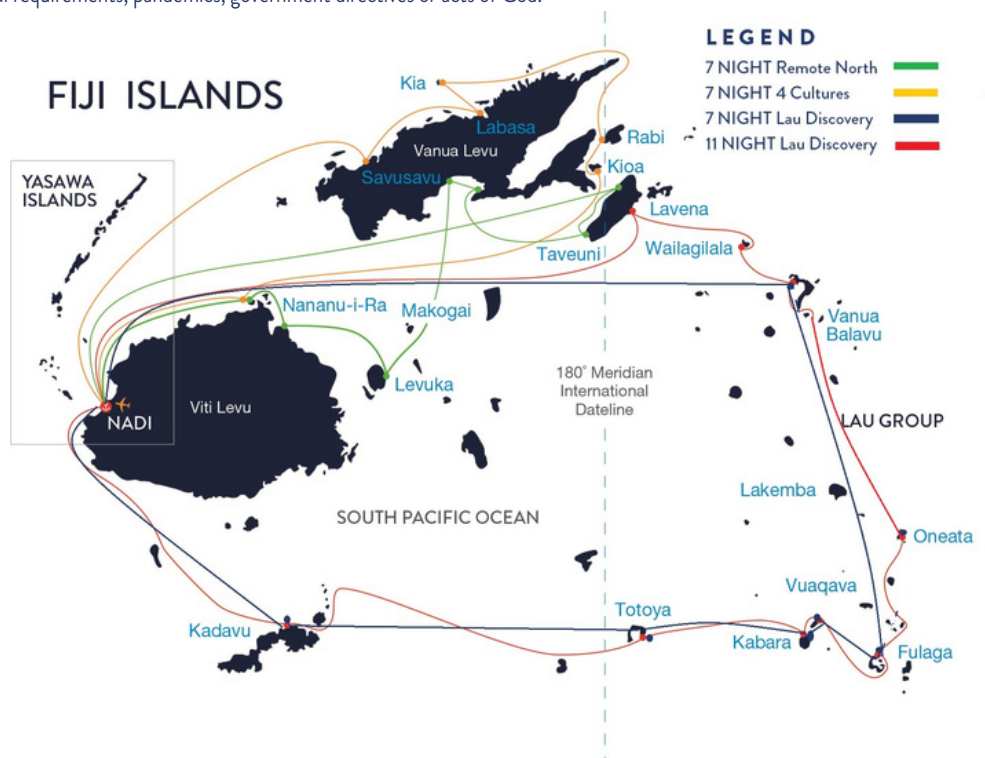
**WEDNESDAY:** Explore uninhabited Vuaqava and its central lake known for turtles, snakes & amazing bird life. This is a sacred island for the Fijian culture and there will be an island walk to explore these relics. Please be warned that a reasonable level of fitness and good walking shoes will be required as the return walk is approximately 3 hours and quite difficult to negotiate. The beach here is also gorgeous for those who prefer to relax. We heave anchor and travel over lunch to our next destination. This afternoon be welcomed & entertained by the people of Naikeleyaga Village on the island of Kabara known for their wood turning and Tongan heritage. Experience a traditional Meke, Sevusevu & lovo quite different from the traditional Fijian. Don't forget your bula shirt and sulu for a traditional lovo dinner on the island.

**THURSDAY:** Horse-shoe shaped Totoya Island is our destination today. We will visit a local school and the children will surprise you with their entertainment and show you their work. We will also have the opportunity to explore their reefs.

**FRIDAY:** We arrive in Kadavu and head to the Village of Nalotu for a welcome Sevusevu, then a tour of the village where you can witness the making of traditional fishing traps and pottery. The women of Nalotu village still make clay pottery in the time-honoured tradition that is rarely seen in Fiji anymore. This evening don your sulu (sarong) and join all the celebrations of our Pacific Island Night Finale.

**SATURDAY:** Disembark feeling refreshed. Most days will offer the opportunity to snorkel, swim and Scuba Dive the pristine waters of the beautiful Lau group of islands.

\* All itineraries are subject to change due to weather, operational requirements, pandemics, government directives or acts of God.



# MV REEF ENDEAVOUR SHIP LAYOUT

Accommodation: MV Reef Endeavour has 63 Tabua Suites, Staterooms and Cabins.

Every cabin type features a private bathroom ensuite, on/off air-conditioning, hair dryer, 240 volt power, international shaver point, Pure Fiji soaps, shampoo and towels serviced daily. Each cabin is approximately 14sqm. Tabua Suites are approximately 28sqm. Staterooms and Suites open onto the outside deck and have 2 windows.

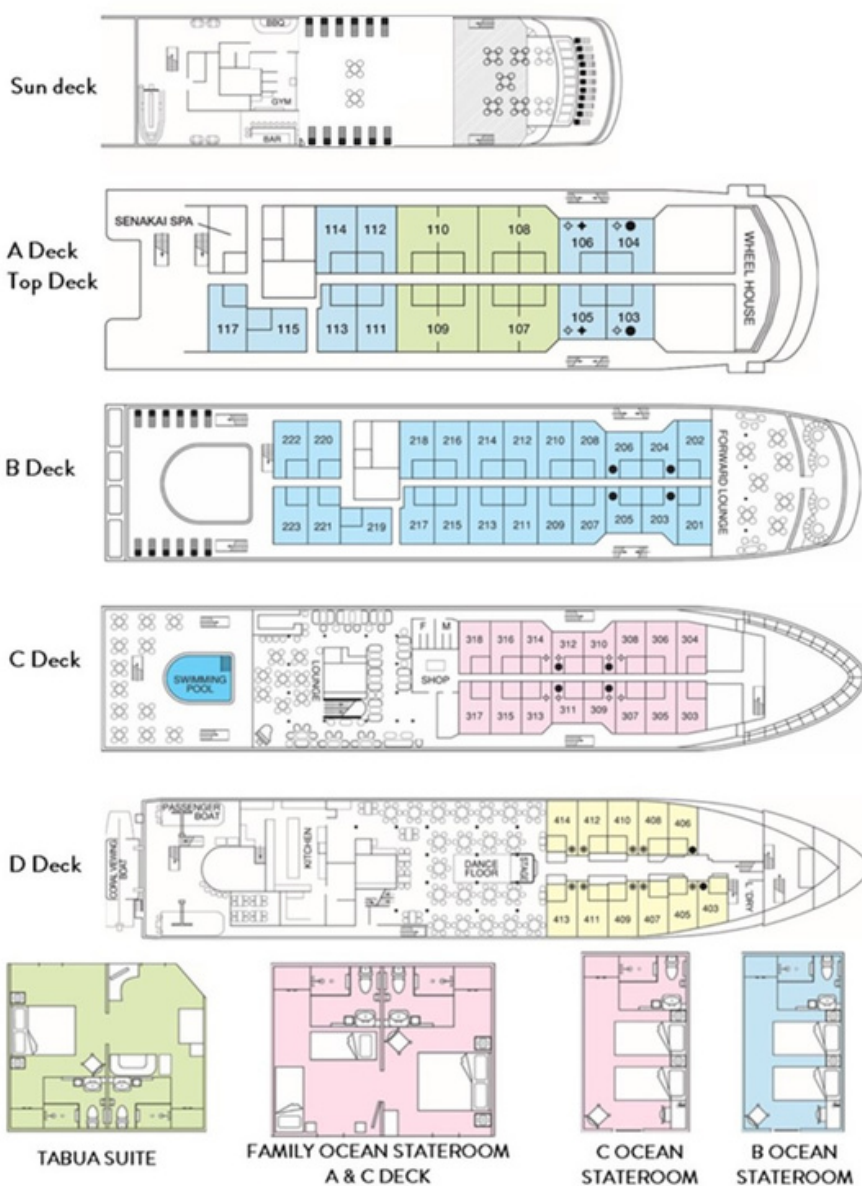
Tabua Suites (4) feature a bedroom (twin/double) with ensuite bathroom, separate day room with chair, settee, desk, TV & DVD player, refrigerator, tea/coffee facilities and second bathroom.

Connecting Family Staterooms (6) located on A & C decks (twin/double)

"B" Ocean Stateroom (33) located on A & B deck

"C" Ocean Stateroom (16) located on C deck

"D" Porthole Cabin (10) open onto an inside passageway (twin/double/bunk triple/bunk quad)



Tabua Suite



Connecting Family  
Ocean Stateroom



C & B Ocean Stateroom



Porthole Cabin