

uptime[®]

the magazine for maintenance & reliability professionals

dec/jan 09

Move Forward with Dynamic Performance Measures

Using the Right Performance Measures • Find Your
Eccentric Motors • Driven Nuts by Squirrel Stores
The Neverending Vibration Problem

RCM-2009
Brochure
Inside

What makes CMMS/EAM software stand out from the crowd? It should certainly provide a complete and accurate maintenance picture, and it should also identify where time and money is being lost and deliver a decision-making support system. If these qualities interest you, you should take a look at...

MVP Plant™

Data provides power. Or, to be more accurate, good data provides power. By arming you with the information you need most, good data helps you manage your parts, maintenance and overall reliability programs better. However, that data needs to be easily accessible and easy to organize, giving you the right information at the right time. MVP Plant has all these qualities, and seems to provide a seamless and powerful CMMS/EAM package.

We caught up with Ruth Hughes, the president and founder of MVP Plant's creator, CMMS Data Group. After working through major improvements with companies like Gonnella Frozen Foods, Riverside Creamery (a Kroger Company), Oak State Products and more, CMMS Data Group has a proven track record of increasing efficiency and reducing costs for maintenance departments across the US.

In these tough economic times, it was quite refreshing to hear that the number one goal of CMMS Data Group is to ensure that plants remain profitable and open. Here is more of what Ruth had to say...

Let's start with you giving us a brief overview of MVP Plant™, what it is and what it isn't.

MVP Plant™ is Smart Software for Smart Maintenance™, meaning that the software works for you, not visa-versa. With MVP Plant, you don't need to know where to look to identify problem areas because MVP Plant alerts you via e-mails, text messages, and dashboard inbox messages when an issue has been detected or a failure predicted. The whole software package has been designed around the end-user with ease-of-use at the top of the list. It not only delivers a decision support system for maintenance, but also for reliability.

MVP Plant is not software written without a thorough understanding of maintenance. Our team, software developers included, understands maintenance because we tour maintenance departments and meet and consult with many maintenance personnel. Weekly meetings are held to discuss maintenance issues and successes, keeping the end-user in the center of our discussions and software development.

What are some of the key features of MVP Plant that distinguish it from other CMMS programs?



A sample Inventory screen from CMMS Data Group's MVP Plant™.

Well, there are quite a few, so I'll just rattle off several important ones:

Hosted (subscription) or Owned Software: You choose if you want CMMS data group to host and manage your application and server, or if you would like to manage the application and server yourself. The hosted solution does not require IT support at your plant where owning the software does.

Enterprise Portal: The enterprise portal allows top management to analyze data across multiple plants from one central, fast, and easy-to-use site. Using today's technology, we've built the enterprise application allowing it to move at the same speed as 1 individual site. It also allows data such as inventory to be shared throughout the enterprise so when an emergency part is needed, a user can quickly and easily see if it is available at another plant, eliminating equipment downtime, long lead times, and expensive expediting charges, especially if the part comes from an overseas vendor.

Web-Based: Delivers a desktop application look and feel with the power of the Web.

Dashboard: Provides a real-time snapshot of current conditions. Based on a user's security, each user customizes his or her dash-

board allowing them to quickly and efficiently see data and perform tasks important for their job.

Alerts: Sends customizable, real-time alerts via e-mail, text, & dashboard inbox messages.

Report Builder: Provides the ability to create and access winning reports from anywhere in the world.

Smart Scheduler: Presents top scheduling choices and allows drag and drop functionality.

Rotating Schedules: Handles rotating schedules via a 52-week schedule.

Barcode Device Users: Tracks maintenance activities via wireless barcodes scanners efficiently, accurately, & effortlessly.

Repairable Spares: We handle repairable spares because we understand repairable spares.

Accounting-Based: Lets you know where you stand financially because every maintenance department must be run like a business.

Failure Modes, Effects, & Criticality Analysis (FMECA): Allows failure analysis to minimize and/or eliminate downtime.

Security Roles: Provides pre-defined and customizable security roles via a simple and easy to use check-box system.

Analysis (KPIs): Performs data analysis and delivers non-conforming data alerts.

APIs: Integrates seamlessly with PLCs and ANY other software package.

MVP Plant Mobile: Allows increased user access via ANY Internet-capable handheld device.

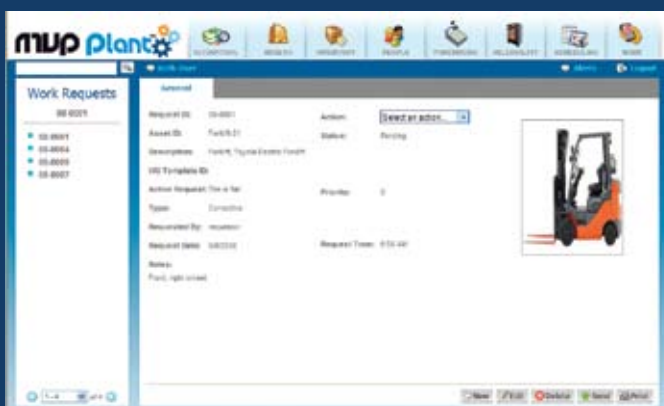
Work Order Check-Off Lists: Displays the percent complete of a work order.

How much training does it take on the software for a company to implement it?

Training takes 5 days, however, there is more to CMMS than training. Implementation is dependent on top management support and the experience of the plant. If a plant possesses electronic lists of their assets, inventory, vendors, and people, then this data can be seamlessly imported and MVP Plant can be up and running in no time. However, if



Sample Work Order (top) and Work Request (bottom) screen shot from MVP Plant™.



data does not exist, then the time that it takes to collect this data is dependent on the plant's time and resources. That is where top management comes in. They must be willing to invest time and resources to save time and money. Yes, getting MVP Plant up and running requires a significant amount of upfront work (but no more than any other properly-implemented program), however, once MVP Plant is up and running, it saves plants a tremendous amount of time through the automation of inventory, work, and purchasing workflows. We provide as much assistance as each plant wants us to provide and we work with them until they achieve MVP Plant success. CMMS is not just about selling software, it's about providing support services to guarantee a successful implementation.

In your opinion, what are the top three reasons a company should consider investing in MVP Plant?

1. To eliminate manual, inefficient inventory, work, and purchasing processes which bleed companies of their profits.
2. Ease of use.
3. To take advantage of today's technology to share data, improve operating uptime,

and increase overall plant efficiency.

In many cases the data is collected in CMMS, but not necessarily acted upon. Does MVP Plant a function that can deal with this issue in any way?

Absolutely. Because MVP Plant alerts its users, no matter how many fires are being fought, users will be notified of eminent data that needs attention. If users don't respond, alerts will be escalated to managers. If managers don't respond, alerts will be escalated to top management. That's the beauty of MVP Plant. It works for you, not vice-versa.

What kind of impact can MVP Plant have on overall plant and machinery reliability?

Minimized/eliminated downtime. Improve reliability via meter-based and predictive maintenance tasks initiated by linked PLC data.

Minimized inventory, purchasing, and work order costs.

Minimized/eliminated manual processes. Eliminated downtime and expedited shipping costs due to out-of-stock parts.

What size of an operation does it take to justify purchasing the MVP Plant?

Honestly, it only takes 3 Maintenance Technicians

How quickly can a company expect for a return on their investment in MVP Plant?

As soon as complete and accurate asset and inventory data exists in MVP Plant and support personnel exist to support the data and software, a return on investment will be realized within 2-3 months.

How can interested people get more information about your CMMS Data Group's MVP Plant?

Anyone interested in learning more about MVP plant can call us at (312) 863-6500, e-mail us at info@CMMSdata-group.com or visit our website: CMMS-datagroup.com

Like What You've Read?

Get your FREE subscription to

uptime
the magazine for reliability & maintenance professionals

Now!

In each issue, Uptime Magazine delivers high quality articles on Predictive Maintenance, Condition Based Monitoring and other hot topics in Reliability and Maintenance.

You receive articles covering:

Information Technology
Infrared Thermography
Lubrication/Oil Analysis
Maintenance Management
Motor Diagnostics
Alignment/Balancing
Reliability
Ultrasound
Vibration

Plus a feature article on relevant topics to help you increase your knowledge about the industry and take your company's predictive maintenance to a higher level.

Subscribe to Uptime Magazine now! Click anywhere on this page and you will be directed to the uptime website. It will take only a minute or two of your time to receive your FREE subscription.