

THE LUME

MELBOURNE

PLANNING GUIDE

Excursion notes for teachers
and groups

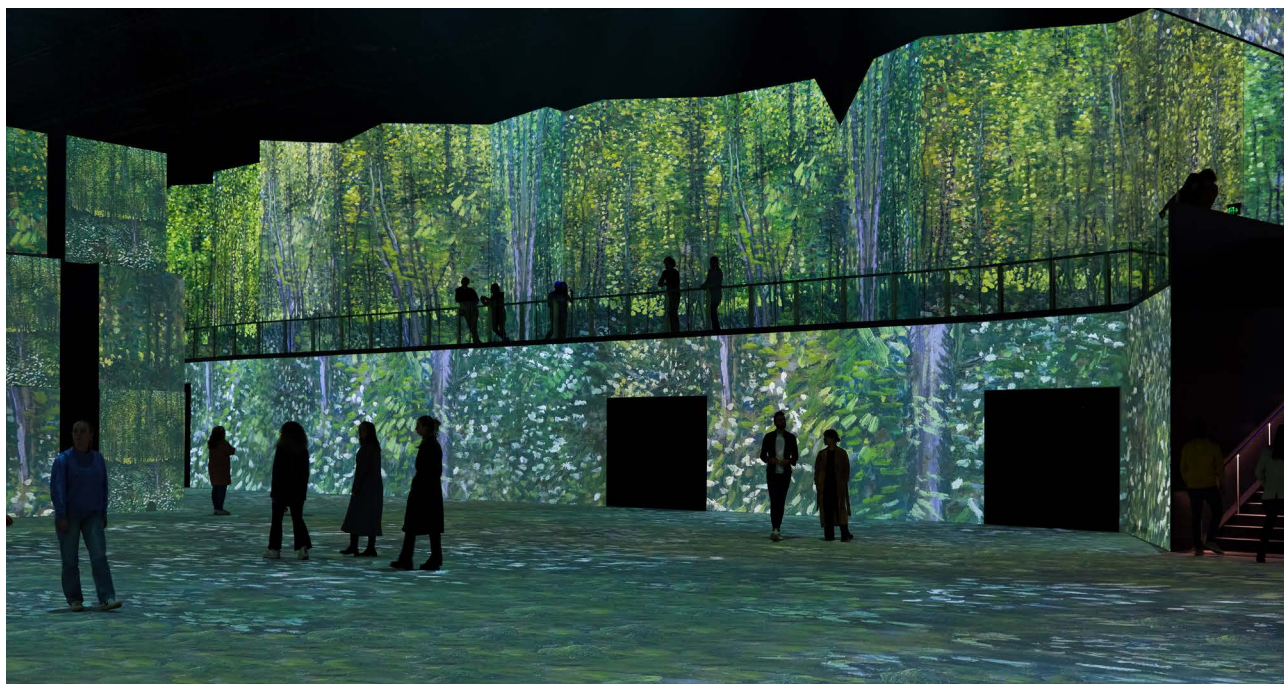


THE LUME MELBOURNE

Stepping into THE LUME Melbourne is an epic adventure into art.

Australia's first permanent digital gallery transforms the world's finest art into fully immersive sensory encounters.

This Planning Guide is designed to help you and your parent helpers prepare for your visit.



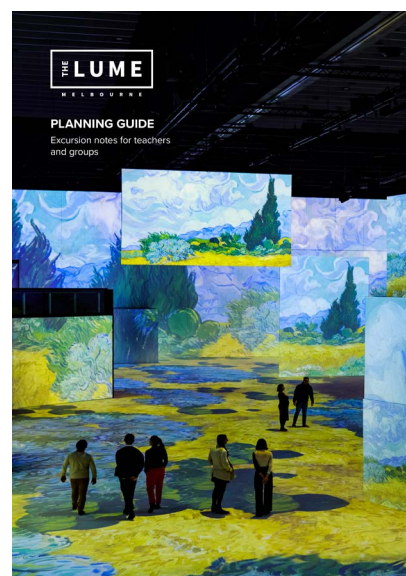
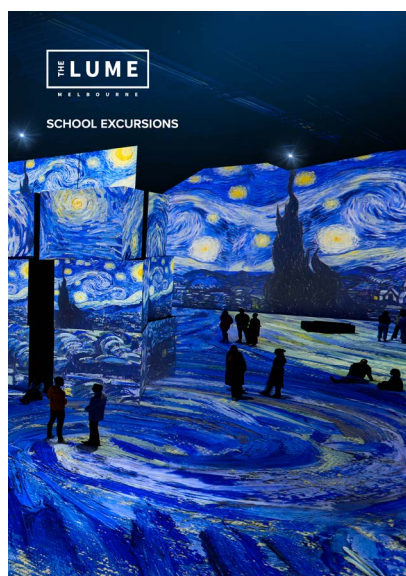
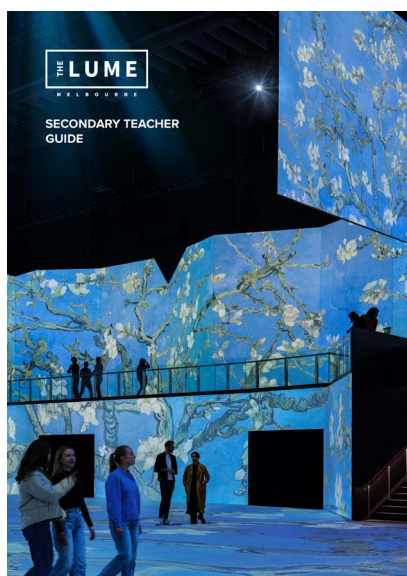
Welcome to The LUME Melbourne!

At THE LUME Melbourne, the walls come alive as light ripples across every surface and masterpieces come to life. Curated tastes, aromas and a choreographed soundtrack add thrilling new dimensions to this 360-degree experience.

Explore, play, dance and marvel as every surface becomes an animated canvas: floors, walls and guests alike. Be transported as familiar landscapes become moving images that tower four storeys tall.

Create your own journey, linger where you please and be delighted by new perspectives on iconic artworks.

IN THE RESOURCES PACK



DISCOVER THE MASTERS IN A WHOLE NEW LIGHT

Teacher resources have been designed to deliver a cross-curricular program for primary and secondary students.

The self-guided activities encourage students to explore the works and techniques of Van Gogh and compare and contrast them with the works of other artists, both historical and contemporary, leading to the creation of their own artwork inspired by nature. You can explore a selection or all of the presented activities depending on the needs and abilities of your students to ensure a holistic, immersive experience of the content.

PRIMARY PROGRAM



The primary program has been developed with the intention of supporting a self-guided school excursion to Van Gogh at THE LUME Melbourne. Pre-visit activities have been included to provide a 'hook' to the content presented. After the excursion, teachers should present the main challenge to their students, supporting their knowledge and understanding in the lead up to this with a range of the post-visit activities.

Each class will be encouraged to organise an exhibition of their nature-inspired artwork and invite other students or members of the school community to view it, with each artist recording a commentary of their work to further invite engagement.

This project has been designed as an immersive, cross-curricular learning experience which may take up to a term to fully explore within the classroom, however teachers should fit the project within their scope and sequence as appropriate.

LEARNING INTENTIONS

Students will:

- Gain a deep understanding of how the natural world inspires art and artists
- Explore and use a range of artistic techniques and materials to express their thoughts and ideas
- Respond to The LUME's Van Gogh experience excursion with artistic intention

Continued on the next page →

PRIMARY PROGRAM CONTINUED



AUSTRALIAN CURRICULUM LINKS

The Arts

- Explore ideas and practices used by artists, including practices of Aboriginal and Torres Strait Islander artists, to represent different views, beliefs and opinions (ACAVAM114)
- Develop and apply techniques and processes when making their artworks (ACAVAM115)
- Plan the display of artworks to enhance their meaning for an audience (ACAVAM116)
- Rehearse and perform music including music they have composed by improvising, sourcing and arranging ideas and making decisions to engage an audience (ACAMUM090)

Maths

- Continue and create sequences involving whole numbers, fractions and decimals. Describe the rule used to create the sequence (ACMNA133)

English

- Understand the uses of objective and subjective language and bias (ACELA1517)
- Investigate how vocabulary choices, including evaluative language can express shades of meaning, feeling and opinion (ACELA1525)

Science

- The growth and survival of living things are affected by physical conditions of their environment (ACSSU094)
- The Earth is part of a system of planets orbiting around a star (the sun) (ACSSU078)
- Living things depend on each other and the environment to survive (ACSSU073)

HPE

- Investigate community resources and ways to seek help about health, safety and wellbeing (ACPPS053)
- Plan and practise strategies to promote health, safety and wellbeing (ACPPS054)

Design and Technologies

- Select appropriate materials, components, tools, equipment and techniques and apply safe procedures to make designed solutions (ACTDEP026)

SECONDARY PROGRAM



The secondary program has been developed with the intention of supporting a self-guided school excursion to Van Gogh at THE LUME Melbourne through a visual arts project. Pre-visit activities have been included to provide a 'hook' to the content presented. After the excursion, teachers should present the aims of the project to their students, supporting their knowledge and understanding and refining their artistic skills with a range or all of the suggested post-visit activities, depending on students' needs and abilities.

Although this is primarily a visual arts program, the activities offer depth and richness through an opportunity to develop the General Capabilities of Critical and Creative Thinking, Personal and Social Capability and Intercultural Understanding. The project also offers an opportunity to provide a culturally responsive curriculum experience through close alignment with the Aboriginal and Torres Strait Islander Histories and Cultures Cross-Curriculum priority.

Students should keep a journal throughout their project, showing their research, evaluation and analyses of artworks, thinking process, and initial sketches or planning for their final artwork.

LEARNING INTENTIONS

Students will:

- Gain a deep understanding of the life and works of Vincent van Gogh and respond with artistic intention to The LUME's Van Gogh experience excursion
- Explore a range of visual conventions, techniques and processes and refine their skill and use of these
- Respond to artwork with their own thoughts and ideas and evaluate their own, and others, artistic choices
- Document their learning journey to identify their thinking process, research and influences on their final artwork

AUSTRALIAN CURRICULUM LINKS

Visual Arts

- Conceptualise and develop representations of themes, concepts or subject matter to experiment with their developing personal style, reflecting on the styles of artists, including Aboriginal and Torres Strait Islander artists (ACAVAM125)
- Develop and refine techniques and processes to represent ideas and subject matter (ACAVAM127)
- Plan and design artworks that represent artistic intention (ACAVAM128)
- Evaluate how representations communicate artistic intentions in artworks they make and view to inform their future art making (ACAVAR130)
- Analyse a range of visual artworks from contemporary and past times to explore differing viewpoints and enrich their visual art-making, starting with Australian artworks, including those of Aboriginal and Torres Strait Islander Peoples, and consider international artworks (ACAVAR131)

BEFORE YOUR VISIT



Talk to your students about your visit to THE LUME Melbourne before arrival. If most of your students have never visited THE LUME Melbourne before, talk to them about classic art and Vincent van Gogh and prepare them for this excursion.

CURRENTLY SHOWING

MAIN FEATURE: VAN GOGH ALIVE

Transcend time and space as you accompany the Dutch master on a multi-sensory tour of the Netherlands, Paris, Arles, Saint Rémy and Auvers-sur-Oise. Young and old will delight at the chance to be surrounded by Van Gogh's glorious *Starry Night*. Surprises await in this symphony of colour, sound, and aroma. Get ready to experience the captivating world of Van Gogh in a whole new light.

ABOUT VINCENT VAN GOGH

Vincent Willem van Gogh was born on 30 March 1853 in Zundert, a small town in a largely agricultural region in the south of the Netherlands.

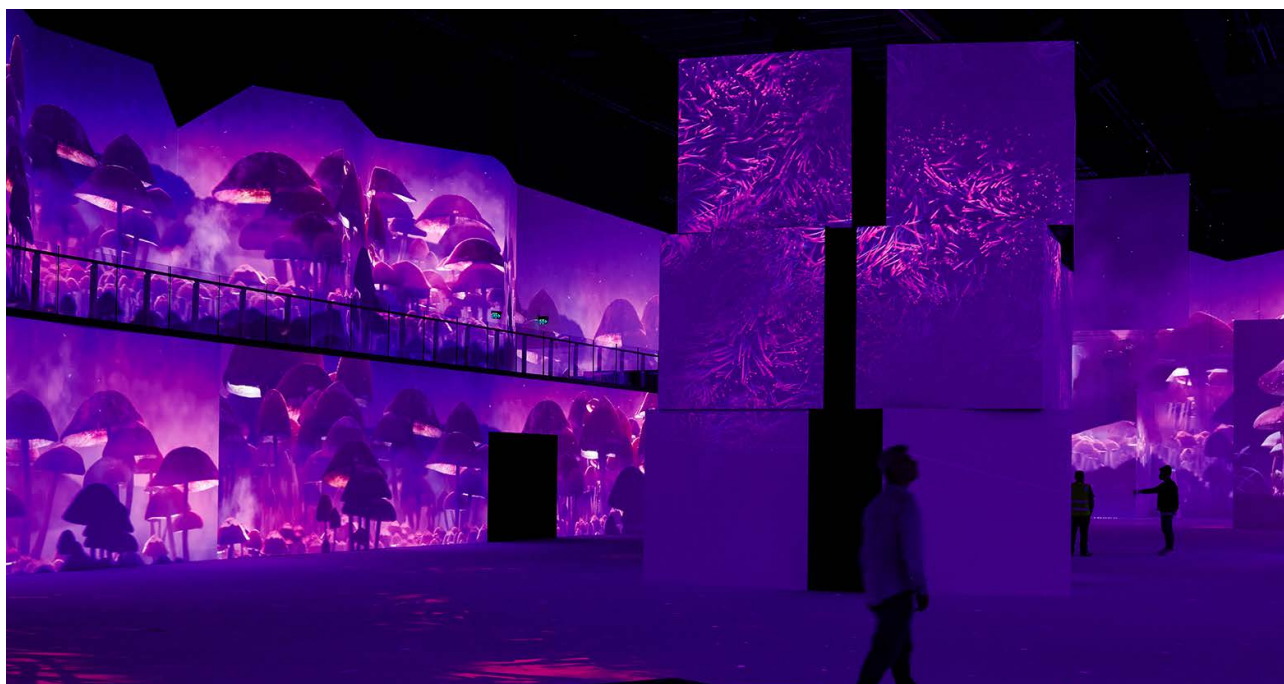
Completely self-taught, Van Gogh was one of the most prolific artists of his time. In only ten years, he produced more than 2,000 works of art, consisting of around 930 paintings and 1,100 drawings and sketches.

Despite this great volume of work, *The Red Vineyard* is the only piece known to have sold during his lifetime, purchased for the equivalent of \$2,445 today.

Van Gogh's artworks now sell for millions of dollars at auctions and private sales around the world. *Portrait of Doctor Gachet* brought one of the highest prices ever paid for a painting, selling to a private collector in 1990 for US \$82.5 million.

Van Gogh will be at THE LUME Melbourne for a limited time only. Development is already underway on the next incredible immersive experience.

FEATURETTES



FEATURETTES: THE LUME DIGITAL ARTS PROGRAM

THE LUME Digital Arts Program aims to foster and celebrate the talent of established and emerging digital media artists in Australia. The following three inaugural featurettes follow the main feature.

COLOURFUL DREAM By 77 Productions

A mesmerising and abstract elemental (fluid & earth) dream sequence about Van Gogh creating and preparing his paints for his creative exploration. Colourful pigments and clear liquids bind and form the beautifully vibrant collisions of colour from Van Gogh's paintings, revealing hidden objects in a fluid-filled dream.

INSIDE OUT By Harrison Grant

Inside Out is a surrealist journey through time and space. Bridging the gap between a physical reality and a stylised perspective of the extraordinary, Inside Out descends through layers of modernism scenes bursting with shapes and colour. Emotional, cinematic and bizarre, it is a homage to the artistic mind of Vincent van Gogh.

OUR STARRY NIGHT by Ross Calia

The First Nations Peoples of Australia are the world's oldest practitioners of astronomy. Our Starry Night is an immersive dance film which is inspired by the 'Emu in the Sky' constellation, and the deep and complex connection Indigenous Australians have with astronomical phenomena. This artwork not only presents a visual experience of dance like never before – it also flips the typical relationship between dancer and composer; rather than dance to the music – in this performance, the music responds to the dance.

WHAT TO EXPECT



INTERPRETIVE AND EDUCATION AREAS

The interpretive area of THE LUME is a great accompaniment to the immersive gallery, providing comprehensive information conveyed in a more traditional way about the art, life and times Van Gogh.

THE BEDROOM

The Bedroom is a life-size representation of Van Gogh's famous artwork Bedroom in Arles, inspired by his actual bedroom at 2 Place Lamartine in Arles, Bouches-du-Rhône, France, known as the "Yellow House". Students are welcome to enter the bedroom and explore the artistic details. Students can be encouraged to identify the techniques and materials that have been used to reimagine the painting at scale. In particular, the careful use of perspective that allows visitors to feel they have stepped into a Van Gogh work.

THE SUNFLOWER ROOM

The vibrant Sunflower Room is a modern interpretation of Van Gogh's works. As students enter the room, they will be awed by a field of sunflowers mirrored through a never-ending horizon. Students can be encouraged to conceptualise how Van Gogh's works can be interpreted into various three-dimensional media, forms and installations.

THE STUDIO

Students can harness their inner artist in The Studio. The Studio features two alternating video tutorials, demonstrating how to recreate Van Gogh's masterpieces, line by line. Students stand at an easel, providing an immersive artist's experience as they replicate the artwork on paper. The artwork can be taken to the classroom for further discussion or display.

ARRIVAL PROCEDURES

BEFORE YOU VISIT

- Check you have an emailed Confirmation/cost estimate and that all details relating to any program, dates and times are correct. Make sure you have your Booking Confirmation. If you do not have this email your booking is not complete.
- If you did not receive a confirmation or to make any corrections, contact THE LUME Melbourne: schools.melbourne@thelume.com
- Discuss behaviour expectations with your students.
- Complimentary teacher planning sessions are available to familiarise yourself with THE LUME Melbourne. This is for you to explore the gallery space and the Van Gogh Experience, plan the educational activities your students will complete while they are visiting THE LUME Melbourne and to complete a risk assessment. You will need to pre-book your visit with our education team at least one week prior to your planned visit day. To request your complimentary ticket, please visit: thelume.com/melbourne/schools

CALCULATE YOUR ARRIVAL TIME

Note the check in time on your confirmation. Your arrival time should be thirty minutes before the time shown on any ticketing, this will ensure a smooth entry into the Gallery.

ARRIVAL INFORMATION

THE LUME Melbourne is conveniently located at Melbourne Convention and Exhibition Centre, South Wharf on the banks of the Yarra River. The main entrance is located at 5 Convention Centre Place, adjacent to the Novotel hotel and DFO – enter via South Wharf main entry.

Trams: Trams 12, 96 and 109 run every 6-12 minutes and stop outside MCEC on Clarendon Street. Trams 70, 35 and 75 run along Flinders Street stopping on the north side of the Yarra River near the pedestrian bridge to MCEC.

Train: Southern Cross Station on Spencer Street is just a short stroll from the venue, with trains running every 15-20 minutes. Visit the MCEC website to find your best route to THE LUME.

BUS PARKING

Bus parking is not available however buses can drop of students outside the main entrance, located at 5 Convention Centre Place, adjacent to the Novotel hotel and DFO.

TOILETS

There are toilets located to the right of the box office.

There are also toilets located within THE LUME Melbourne, towards the back of the gallery. In line with your duty of care requirements you may wish to restrict access to the toilets during a certain time period or have students notify a teacher.

DURING YOUR VISIT

OUR SUGGESTED TIMELINE

10 minutes - Meet outside THE LUME Melbourne, meet Duty Manager, check vaccination, scan tickets

10-15 minutes - Interp area, and photos in Van Gogh's bedroom

Up to 60 minutes – Main feature and featurettes

10 minutes - Follow along to create your own Van Gogh in The Studio

5 minutes – Selfies in The Sunflower Room

DUTY OF CARE

The gallery has a number of interesting yet separated spaces, we recommend that you be in the line of sight with students at all times.

The brilliant thing about the gallery is that it appeals to all sorts of people, as this is a public space which can be very busy at times, older people and little ones are often also roaming the space so it's a good idea to remind students about being aware of other people in the space

We also prefer students to wear their school uniforms.

To maintain the Gallery's white floors which are used as a projection surface food is not permitted in the gallery unless being consumed in Café Terrace 1888. School groups of 7 or less (1 teacher and 6 students) are welcome in Café Terrace 1888.

EMERGENCY PROCEDURES

Assistance: Students should know they can ask for help from any LUME Melbourne staff member.

Lost Students: Remind students that if they get lost, remain in place so teachers can retrace their steps and find the lost student.

First Aid: If a student gets injured, ask any LUME Melbourne staff member for assistance. Teachers are responsible for communicating with their school officials in the event of a student injury.

Emergency: In the rare event of an emergency requiring the evacuation of the LUME Melbourne, students, teachers and parent helpers should exit the building at the closest available exit and follow instructions of emergency wardens. Account for all members of your group and confirm with LUME Melbourne staff.

If you have students who may require additional assistance in the case of an emergency, please advise the Duty Manager at the start of the visit to they can provide the additional assistance in an emergency.

THE SHOP

Items are available for purchase from our store. If visiting the store, students must be fully supervised. Purchases are card only, THE LUME Melbourne is a cashless venue.

BAG AND LUNCH STORAGE

Storage for school groups is not available so it is advised the lunches be carried in a group basket with a label. THE LUME Melbourne staff can store these baskets/crates if required.

For security reasons please do not leave your bags unattended in the building at any time.

LUNCH PLANS

Food is not permitted in the gallery.

School groups may eat in the Melbourne Convention & Exhibition Centre foyer areas. Please ensure all rubbish is taken with you or placed in available rubbish and recycling bins.

THE LUME

MELBOURNE



Owned and Created by



GRANDE
EXPERIENCES