



Client: Binyah

Disciplines: Infrastructure, Architecture, Structure & MEP

Scale: 800 Hectare

Team Size: 10-12 Engineers

Duration: 16 Months

Location: KSA

Software: **C** Civil 3D **N** Navisworks

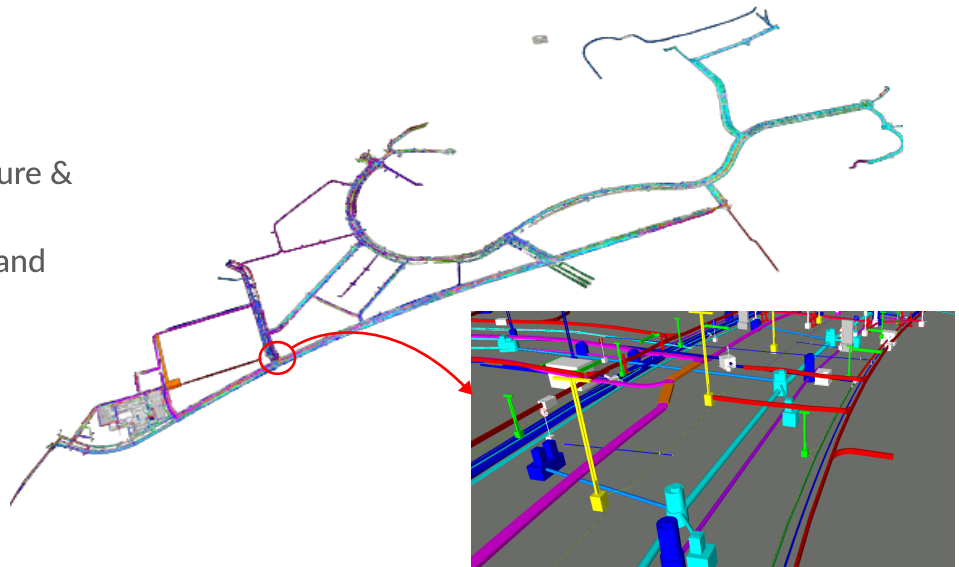
R Revit **B** BIM 360

PROJECT OVERVIEW

- Misk City will be an entirely new district of Saudi Arabia's capital, Riyadh. It will play a central role in transforming Saudi Arabia in line with the principles of Vision 2030. MiSK City's vision is to be recognized regionally and internationally as a hub for its four pillars: Innovation, Education, Culture, Media.

SCOPE & DELIVERABLES

- LOD 350/400/500 Infrastructure & Building BIM Models
- Generation of Shop Drawings and As-Built Drawings
- COBIE Data Entry
- 5D Quantification and BOQ generation



THE TECHTURE APPROACH

- Deployment of onsite personnel to manage site related BIM activities and BIM coordination
- Development of custom dynamo scripts to achieve shorter turn around times
- Appointed a dedicated QA/QC personnel to continuously monitor the deliverable generated considering the scale of project
- Documentation process established to issue changes in design/model to other trade partners