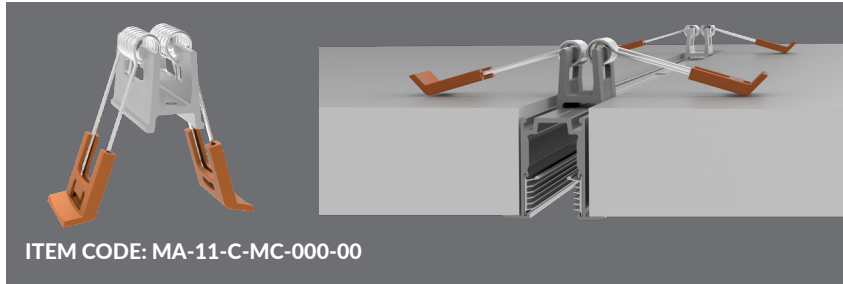
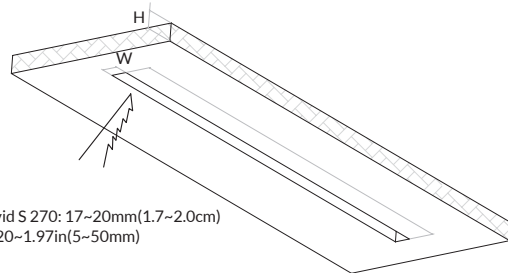
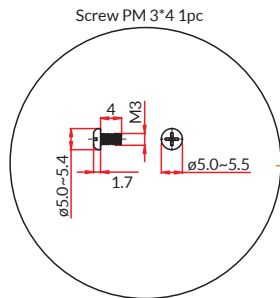
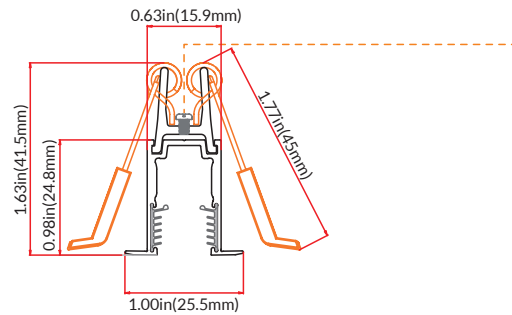


BASIC S LANDSCAPE CEILING MOUNTING CLIP

Version 1.0 | Specifications are subject to change without notice.



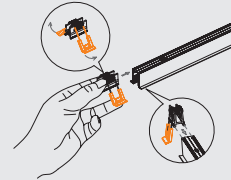
ITEM CODE: MA-11-C-MC-000-00



The width applicable to Vivid S 270: 17~20mm(1.7~2.0cm)
The thickness of ceiling: 0.20~1.97in(5~50mm)

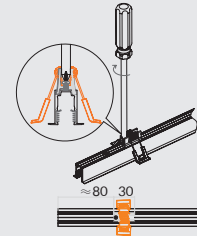
Installation Instructions

Step 1



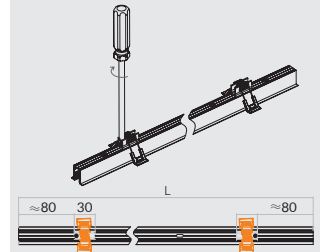
Unfold the spring a little and slide to groove of mounting profile.

Step 2



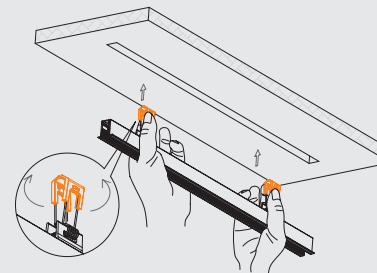
Slide forward ceiling mounting bracket 80mm and fix the screw tightly.

Step 3



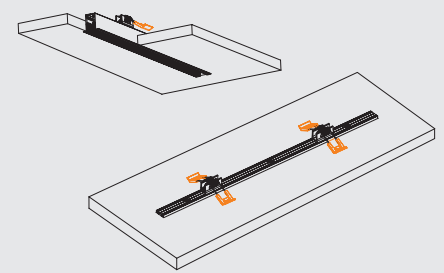
Repeat step 1 & step 2 for the remaining brackets and secure at least 2 locking points for each mounting profile and the equal interval is more recommended.

Step 4



Mark and then slot the ceiling as per the following dimension.

Step 5



Hold the springs with hands and loosen them after clipping into the ceiling.

Note:
Applicable to all types of mounting profiles

UNITED STATES

Pacific Business Center
1075 American Pacific Dr.,
Ste. A Henderson, NV 89074

CANADA

Suite 200, 264 Botsford Street,
Moncton, New Brunswick,
E1C 4X7, Canada

UNITED KINGDOM

Unit 21, The Old Rectory,
Northfleet, Gravesend,
DA11 8HN, UK

PHONE

+1-888-580-6366

DISCLAIMER

GLLS reserves the right to make any design changes for continuous improvement which will not affect the overall appearance or performance.

WEBSITES

www.glls.com
www.ledneonflex.com
www.aquaneon.com

PAGE

1

of 1