



VIVID
S 160
RGB
SILICONE 24V

Version 1.4



For More Information

Toll Free: 1 (888) 580-6366



Light Dimension	0.45 x 0.83in (11.5x21mm)		
Output	RGB		
LED Light	SMD, Tri Chip LED Chip		
Max Run Length			
Single Feed	Full Load: 32.8ft (10m)	Dynamic Load: 49.2ft (15m)	
Double Feed	Full Load: 65.62ft (20m)	Dynamic Load: 98.43ft (30m)	
Light Surface	Square profile 160°		
Lumen Maintenance	70,000 Hours L70 @ 25°C : 90,000 L50 @ 25°C 50,000 Hours L70 @ 50°C : 70,000 Hours L50 @ 50°C		
Electrical			
Input Voltage	24V DC		
Power Consumption	3.66W/ft (12W/m)		
Physical			
LED Count	18 LEDs/ft (60 LEDs/m)		
LED Spacing	0.66in (16.67mm)		
Cutting Unit Length	3.94in (100mm) (6 LEDs)		
Thermal Management	Free air convection		
Fixture Connections	End, side & bottom lead wires		
Minimum Bend Diameter	4.72in (120mm) (Side Bending)		
Temperature Ranges			
Installation	-40°F to 122°F (-40°C to 50°C)		
Operating	-40°F to 131°F (-40°C to 55°C)		
Humidity	0-95% non condensing		
Dependability			
Warranty	10 Year Limited Warranty		
Safety			
Certification	Tested to UL & CSA by Underwriters Laboratory for use in USA and Canada, complies with California Title 24 Requirements, Lighting Facts. Exceeds ANSI C78.377A, CE & RoHS Compliant.		
IP Rating	IP68 with appropriately rated accessories		

Available Colors

Color	CCT Wavelength
Red	618-624nm
Green	522-528nm
Blue	468-474nm
R+G+B	N/A

Lumen Count

Color	Per Foot	Per Meter	Power/m
Red	>15.24lm	>50lm	/
Green	>36.59lm	>120lm	/
Blue	>7.62lm	>25lm	/
R+G+B	>56.45lm	>195lm	3.66W/ft (14W/m)

*Color Jackets:

For standard or custom color jacket options, contact your Account Manager. Min. order quantity of 656ft (200m).

Beam Angle
160°

Bending Diameter
D:120mm

Flame Resistant

UV Resistant

Solvents Resistant

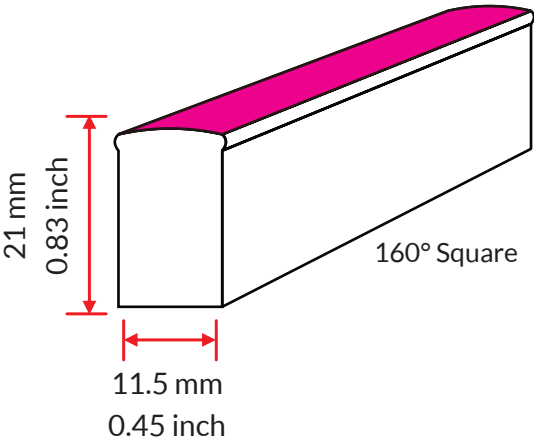
Saltwater Resistant

IP68 Protection

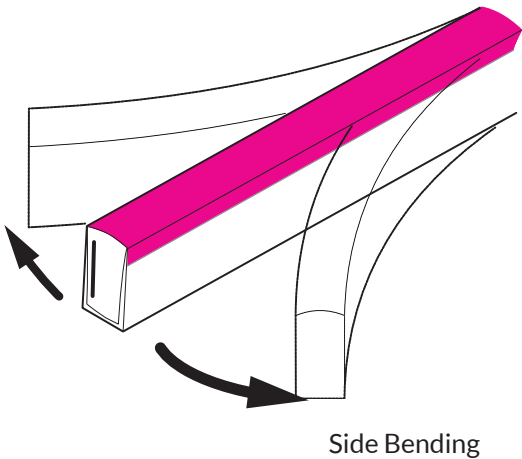
IK08 Protection

10 Year Warranty

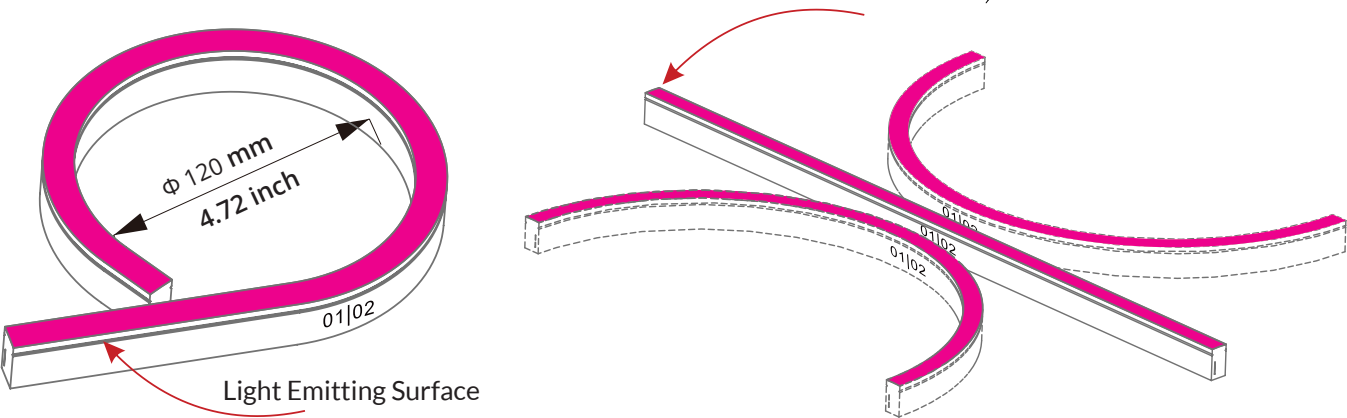
Light Profile



Bending Direction



Minimum Bending Diameter

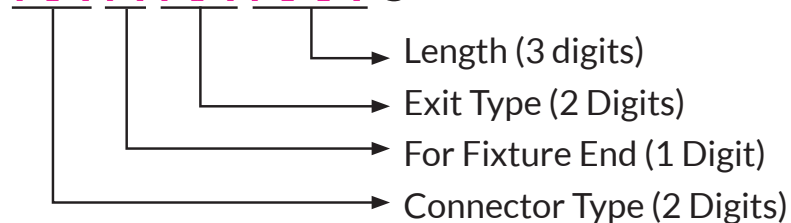


Fixtures

SF-11B-1-01-4W-E-RGB-24DV

Lead Connector

FA-11B-1-01-4W-XX-X-XX-XXX-S

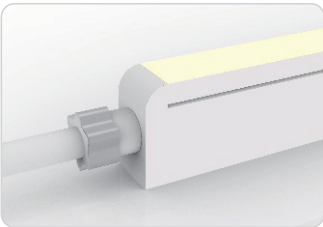


Connector Type (2 Digits)	For Fixture End (1 digit)	Exit Type (2 digits)	Length (3 digits)
SC - Snap Conenctor	1 - Input side	EN - End	0M3 - 0.98ft (30cm)
SE - Seamless	2 - Output side	BO - Bottom	01M - 3.28ft (1m)
	0 - Jumpers/T-Feeds/ Seamless (or Submersible) Bottom/ Seamless (or Sub- mersible) End	SL - Side left	03M - 9.84ft (3m)
		SR - Side right	05M - 16ft (5m)
		EJ - End jumper	10M - 32.81ft (10m)
		BJ - Bottom jumper	000 - For End Cap
		TF - Power T feed	

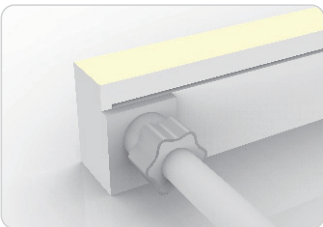
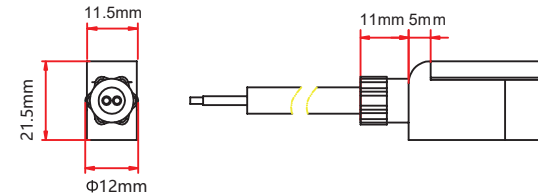
For full part number naming rules, please refer to the document on www.glls.com/support/documentation/

IP68: Submersible. Factory Assembly only.

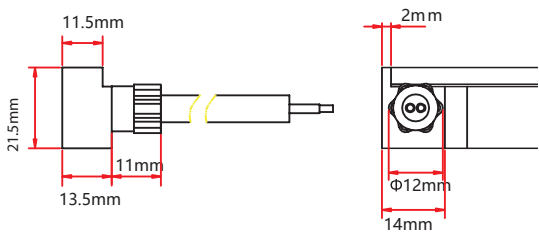
Seamless



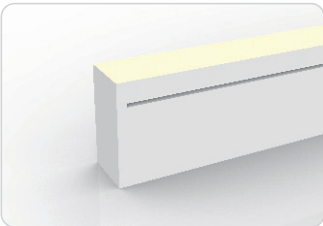
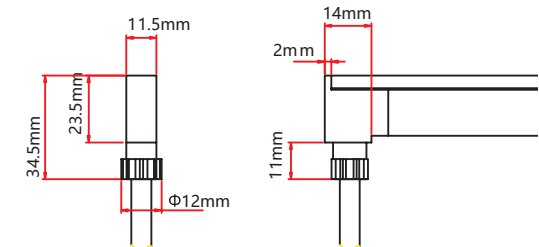
Seamless End Exit
FA-11B-1-01-4W-SE-0-EN-XXX-S



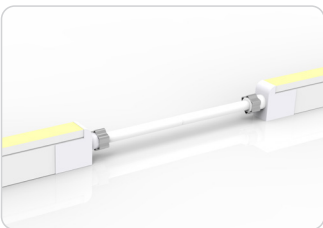
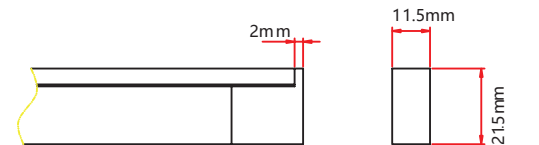
Seamless Side Exit
FA-11B-1-01-4W-SE-1-SR-XXX-S
FA-11B-1-01-4W-SE-2-SL-XXX-S



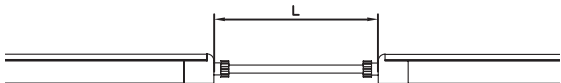
Seamless Bottom Exit
FA-11B-1-01-4W-SE-0-BO-XXX-P



Seamless End Cap
FA-11B-1-01-0W-SE-1-EC-000-P
FA-11B-1-01-0W-SE-2-EC-000-P

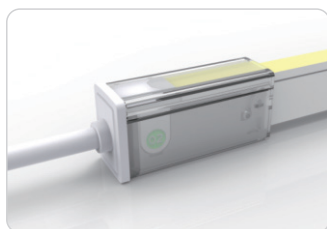


Seamless Jumper
FA-11B-1-01-4W-SE-0-EJ-XXX-S



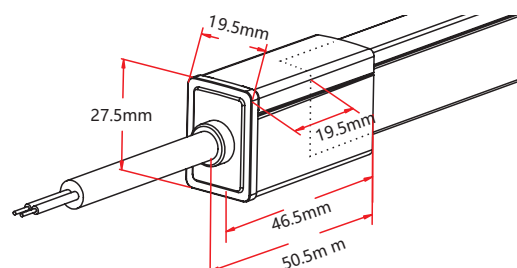
IP67: Rated for outdoor use.
Factory Assembly or DIY.

Snap



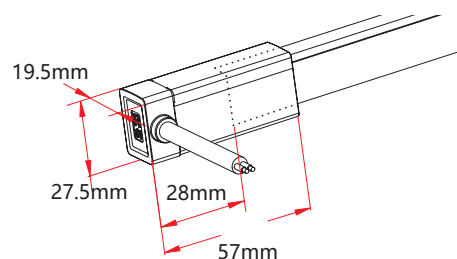
Snap End Exit

NA-11B-1-01-4W-SC-1-EN-XXX-S
NA-11B-1-01-4W-SC-2-EN-XXX-S



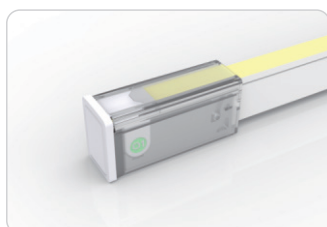
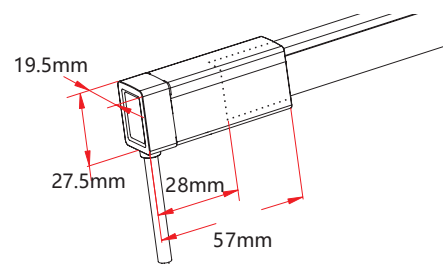
Snap Side Exit

NA-11B-01-1-4W-SC-1-SL-XXX-S
NA-11B-01-1-4W-SC-2-SL-XXX-S
NA-11B-01-1-4W-SC-1-SR-XXX-S
NA-11B-01-1-4W-SC-2-SR-XXX-S



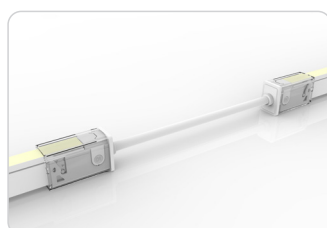
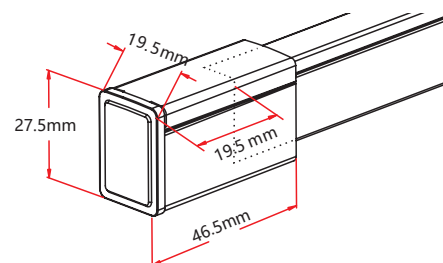
Snap Bottom Exit

NA-11B-1-01-4W-SC-1-BO-XXX-S
NA-11B-1-01-4W-SC-2-BO-XXX-S



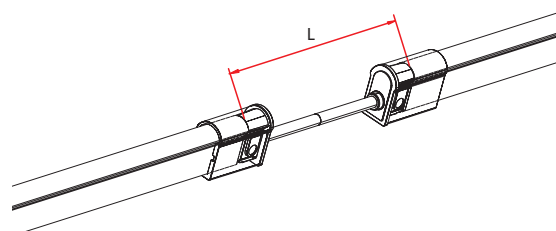
Snap End Cap

NA-11B-1-01-0W-SC-1-EC-000-P
NA-11B-1-01-0W-SC-2-EC-000-P



Snap Jumper

NA-11B-1-01-4W-SC-0-EJ-XXX-S

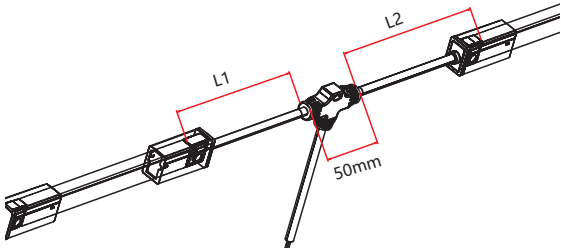


IP67: Rated for outdoor use.
Factory Assembly or DIY.

Snap



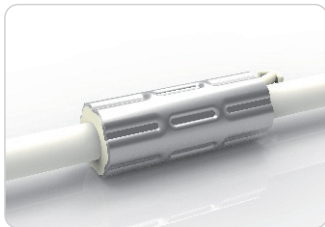
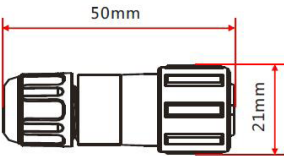
Snap Power T Feed
NA-11B-1-01-4W-SC-0-TF-XXX-S



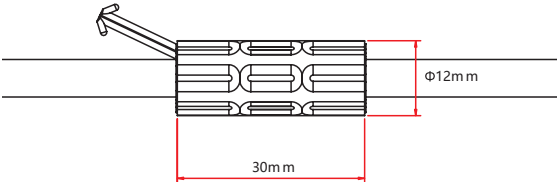
Barrel Connectors



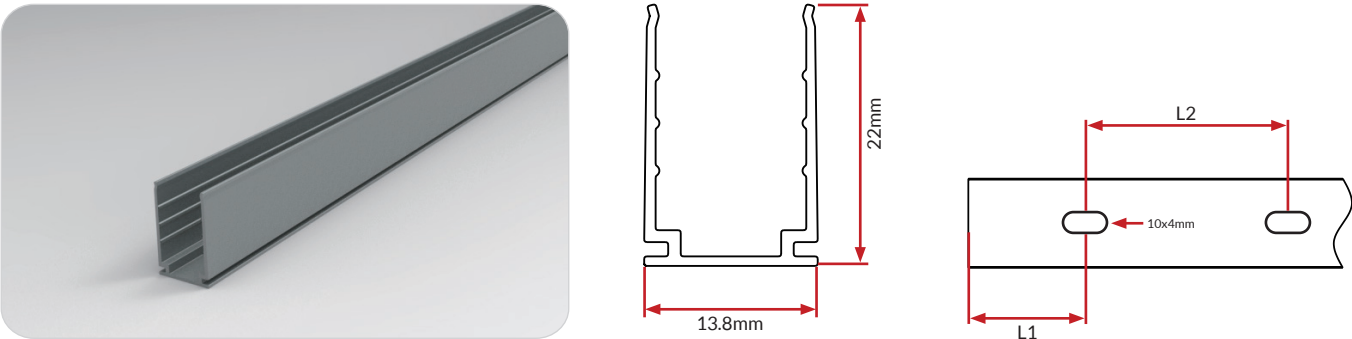
Barrel Connectors
NA-XX-BC-DC-CXX-F
NA-XX-BC-DC-CXX-M
NA-XX-BN-XXA-CXX-F
NA-XX-BN-XXA-CXX-M
NA-XX-PL-XXA-CXX-F
NA-XX-PL-XXA-CXX-M



Anti-Wicking Ferrule

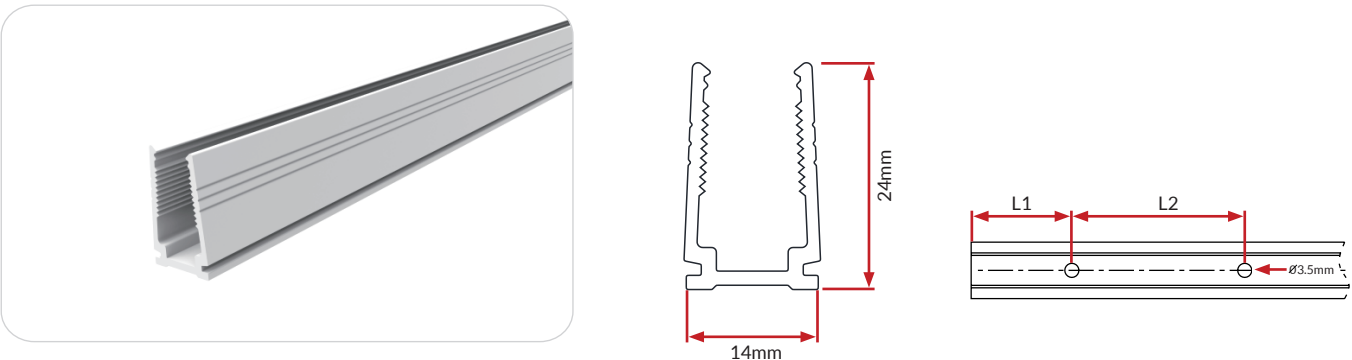


Standard Anodized Aluminum Channel



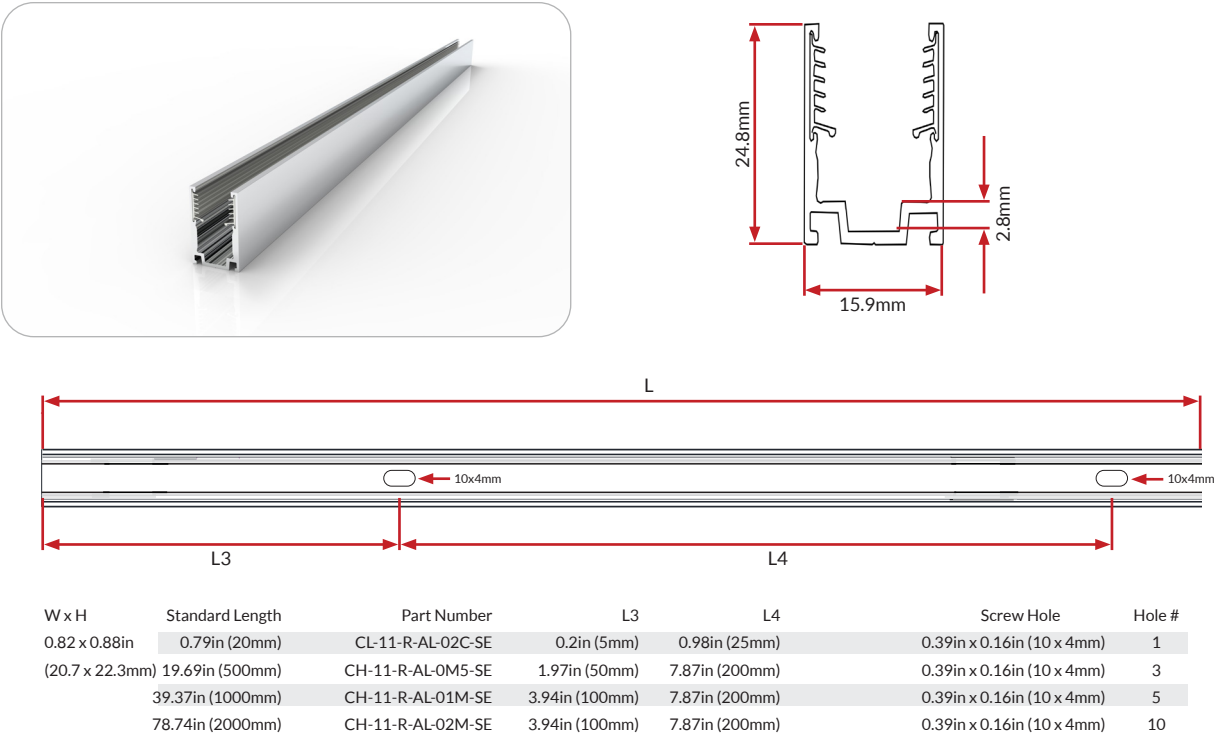
W x H	Standard Length	Part Number	L1		L2	Screw Hole	Hole #
0.54 x 0.87in (13.8 x 22mm)	1.38in (35mm)	CL-11-R-AL-3C5-SD	0.69in (17.5mm)		/	0.39x0.16in(10x4mm)	1
	19.69in (500mm)	CH-11-R-AL-0M5-SD	1.97in (50mm)	7.87in (200mm)		0.39x0.16in(10x4mm)	3
	39.37in (1000mm)	CH-11-R-AL-01M-SD	3.94in (100mm)	7.87in (200mm)		0.39x0.16in(10x4mm)	5
	78.74in (2000mm)	CH-11-R-AL-02M-SD	3.94in (100mm)	7.87in (200mm)		0.39x0.16in(10x4mm)	10

Plastic Channel

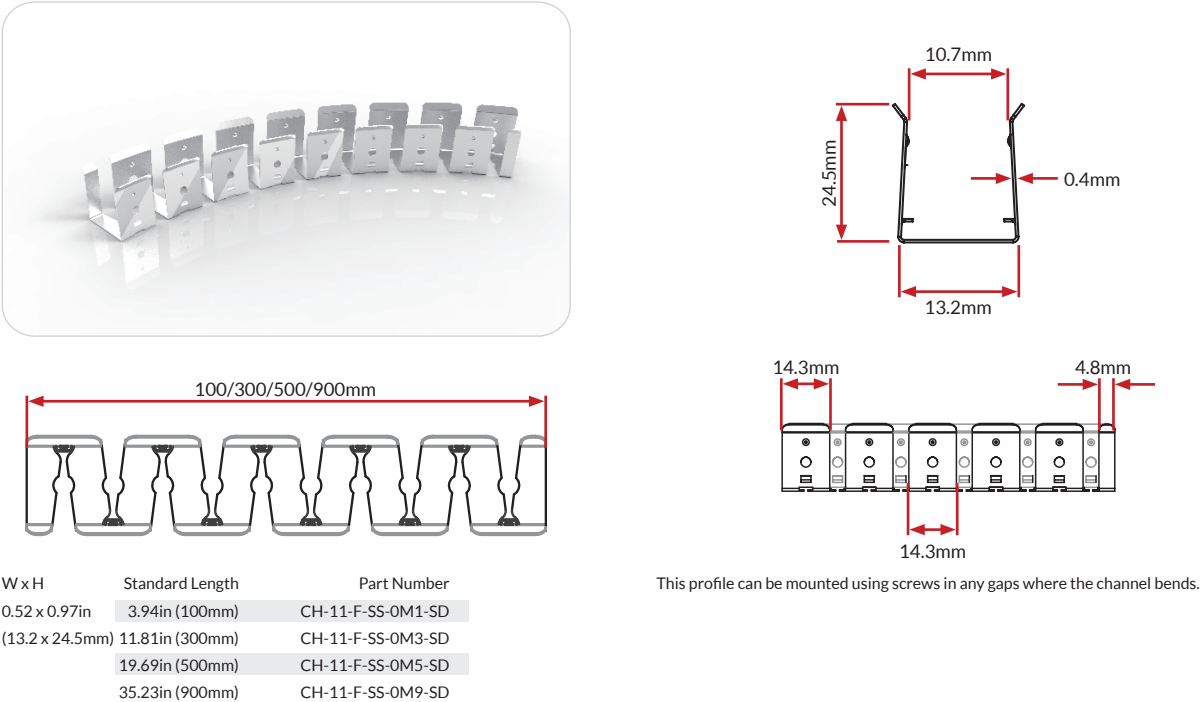


W x H	Standard Length	Part Number	L1		L2	Screw Hole	Hole #
0.55 x 0.94in (14 x 24mm)	19.69in (500mm)	CH-11-R-PL-0M5-SD	1.97in (50mm)	7.87in (200mm)		Ø 0.14in (3.5mm)	3
	39.37in (1000mm)	CH-11-R-PL-01M-SD	3.94in (100mm)	7.87in (200mm)		Ø 0.14in (3.5mm)	5
	78.74in (2000mm)	CH-11-R-PL-02M-SD	3.94in (100mm)	7.87in (200mm)		Ø 0.14in (3.5mm)	10

Standard Aluminum Channel with Silicone Grip



Stainless Steel Flexible Channel



Certifications

	Testing Organization	Certificate Serial N°	Report Reference
UL 2108	UL	20160726-E360029	E360029-2013
CE-EMC	SGS	SZEM1702001259LMV	SZEM160600421302

Fixture Testing

Optical Testing

Spectrum Analysis	IES LM 79 (Lumen, CCT, CRI, XY, SDCM, wavelength)
Photometric Distribution	IES LM 73 (Lumen intensity distribution & Lux diagram)
Lumen Maintenance & Lifetime	IES LM 84 & IES TM28

Temperature Testing

Normal Temperature Test	UL1598 & UL2388 & IEC60598-1 & IEC60598-2-21
Abnormal Operation Test	UL1598 & UL2388 & IEC60598-1 & IEC60598-2-21

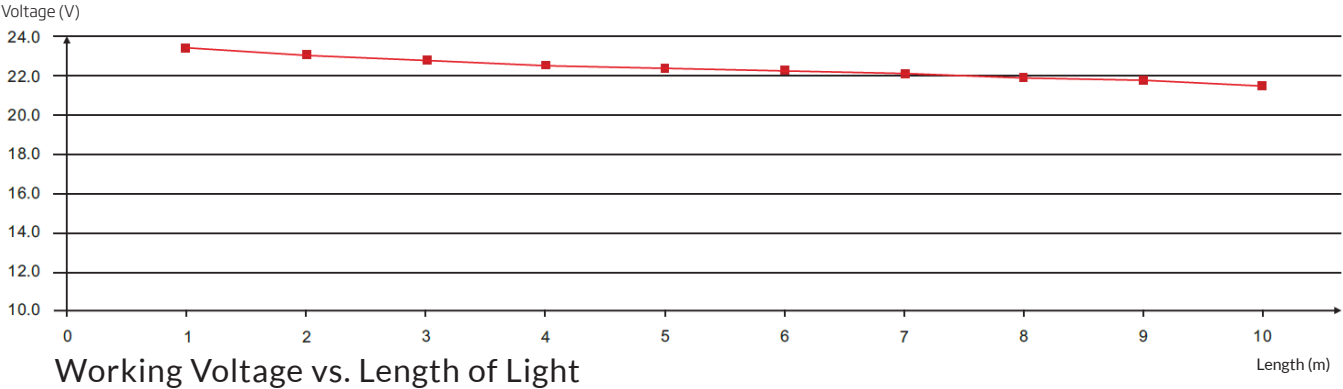
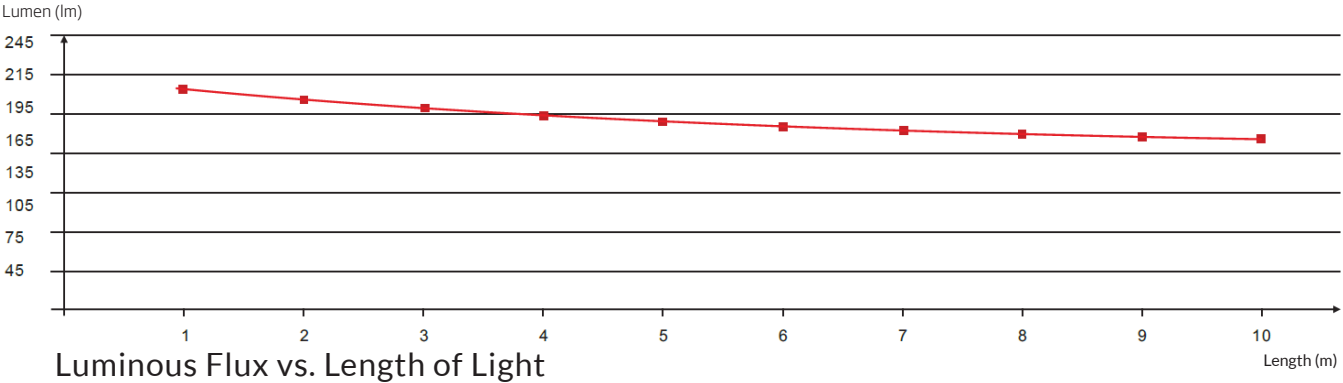
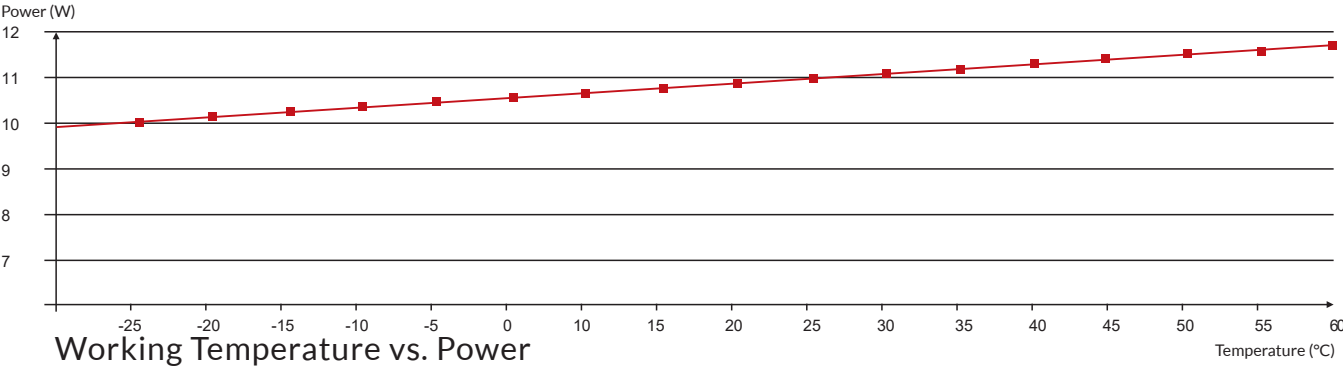
Durability Testing

Bending Test	Manufacturer-defined, 500 cycles
Swing Test	UL2388, >750 cycles
Tensile Test	Manufacturer-defined, > the weight of light in max. connection length double feed
Twist Test	Max connection length double feed Manufacturer-defined, >200 cycles
Ball Impact	UL1598 & UL2388 & IEC60598-1 & IEC60598-2-21
IK07 IK08	IEC62262

Environmental Testing

Chlorinated Water Immersion	BG9667, PH6.8-7.6, free chlorine 0.3-0.6mg/L
Salt Water Immersion	IEC60598-1, Salinity 4%
Salt Spray Test	IEC68-2-11
Outdoor Exposure	Manufacturer-defined
Flame Resistance	UL94
UV Exposure	ASTMG 154, ISO 4892-3, UVA @ 340nm
IPX5, IPX6, IPX7, IPX8	IEC60529
Temperature Shock	Manufacturer-defined, -40°C - 60°C (typical temperature range)
Constant Temperature	Manufacturer-defined

Charts



Charts

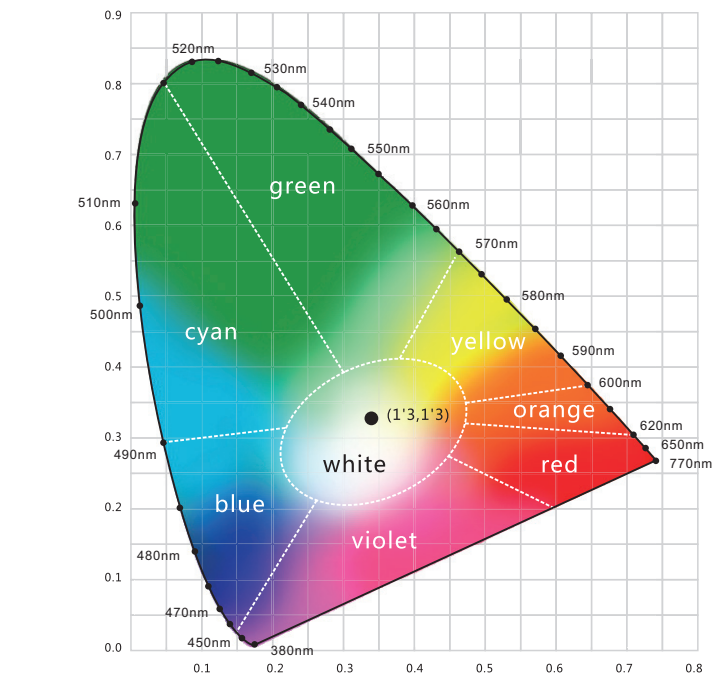
ANSI STANDARD

Nominal CCT Categories

Nominal CCT	Target CCT and tolerance(K)	Target D _{uv}	D _{uv} Tolerance Range
2200K	2238 ±102	0.0000	Tx:CCT of the source
2500K	2460±120	0.0000	For Tx<2870K
2700K	2725 ±145	0.0000	0.000±0.0060
3000K	3045±175	0.0001	For Tx≥2870K
3500K	3465±245	0.0005	D _{uv} (Tx)±0.0060
4000K	3985±275	0.0010	where
4500K	4503±243	0.0015	D _{uv} (Tx)=57700 x (1/Tx)2
5000K	5029±283	0.0020	-44.6 x (1/Tx)
5700K	5667±355	0.0025	+0.00854
6500K	6532±510	0.0031	
Flexible CCT (2200-6500K)	T _F ¹⁾ ±ΔT ²⁾	D _{uv} T _F ³⁾	

Remark:

- 1) T_F is chosen to be at 100K steps (2300,2400,.....,6400K),excluding the ten nominal CCTs listed in Table 1.
- 2) ΔT=1.1900x10⁸xT³-1.5434x10⁴xT²+0.7168xT-902.55
- 3) Same as in the D_{uv} Tolerance Range.

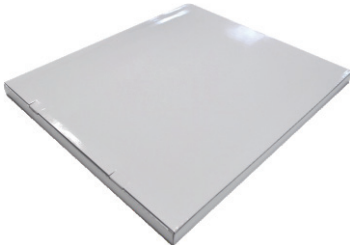
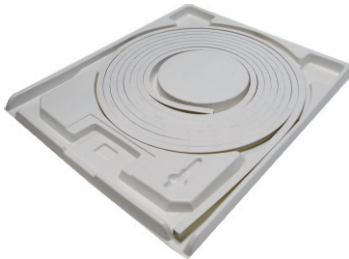


Light Color

Red
618-624nm

Green
522-528nm

Blue
468-474nm



White Box

Packing Box

Fixture Length	White Box Dimensions		Packing Box Dimensions	# Of White Boxes	Package Weight
196.85in (5m)	15.35x2.05x19.67in (39x5.2x50cm)		20.47x15.34x11.02in (52x41x28cm)	5	30.86lbs (14kg)
393.7in (10m)	20.08x2.05x24.41in (51x5.2x62cm)		25.2x20.87x11.02in (64x53x28cm)	5	57.32lbs (26kg)
393.7in (10m)	20.08x2.05x24.41in (51x5.2x62cm)		25.2x20.87x6.9in (64x53x17.5cm)	3	35.27lbs (16kg)
787.4in (20m)	26.77x2.05x31.1in (68x5.2x79cm)		31.9x27.56x4.92in (81x70x12.5cm)	2	48.5lbs (22kg)