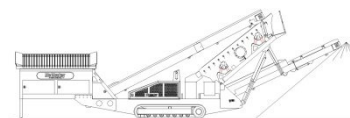


# S130 3-Deck RINSER



## SPECIFICATIONS



### **DESCRIPTION**

Heavy duty mobile screener with following features:

- 14x5 heavy duty high energy 3 deck 2 bearing rinser screenbox.
- 100Hp Cat engine.
- Track or wheel mobile.
- Integrated hydraulic folding stockpiling conveyors.
- Remote control tipping grid.
- Fast on site setup time – 10 minutes.
- Recommended flow and pressure
  - o 3800 to 4500 lpm (1000 to 1200 us gal/min)
  - o 1.75 to 2 bar (25 to 30 psi)

### **DIMENSIONS AND WEIGHTS**

#### **Length - transport**

12ft Hopper 15.61m (51' - 2")

15ft hopper 16.52m (54'2")

#### **Width – transport**

500mm aux conv 3.060m (9' - 10")

650mm Aux conv. 3.24m (10'8")

Height - transport 3 deck track 3.45m (11' - 4")

Height - transport 3 deck wheel 3.73m (12' - 3")

Weight - track 29,000 Kgs (63,933 lbs) - estimated

Weight - wheel 25,000 Kgs (55,115 lbs) - estimated

### **CAPACITIES**

Diesel tank capacity 399 L (105 US gal)

Hydraulic tank capacity 630 L (166 US gal)

Capacity - 12ft hopper 8.01 m<sup>3</sup> (10.48 yd<sup>3</sup>)

### **FEED CONVEYOR**

Belt width 1200mm (48")

Belt spec Plain 500/3 6+3

Drive drum dia. 335mm (13.1")

Tail drum dia. 320mm (12.5")

Gearbox Bonfig 805 W2

Gearbox ratio 24.2

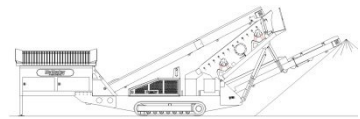
Gearbox torque 7000Nm cont, 12500Nm max

Motor Danfoss OMSS160

Flow rate 50.6 Lpm (13.4 US gpm)

Adjustable speed YES

Maximum speed 13.1 rpm



#### **MAIN CONVEYOR**

Belt width	1050mm (42")
Belt spec	Plain 400/3 6+1.5
Drive drum dia.	285mm (11.2")
Tail drum dia.	270mm (10.6")
Motor	Danfoss OMV630
Flow rate	72.6 Lpm (19.2 US gpm)
Adjustable speed	OPTION
Maximum speed	115.2 rpm

#### **SIDE CONVEYOR**

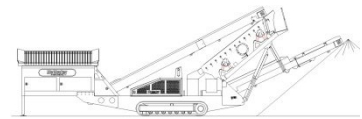
Stockpile height - track model	4600mm (15' - 1")
Stockpile height - wheel model	4870mm (15' - 11")
Belt width	650mm (26")
Belt spec	Chevron - 400/3 6+1.5
Drive drum dia.	285mm (11.2")
Tail drum dia.	270mm (10.6")
Motor	OMT400
Flow rate	50.6 Lpm (13.4 US gpm)
Adjustable speed	YES
Maximum speed	126.5 rpm

#### **3 DECK TRANSFER CONVEYOR**

Belt width	650mm (26")
Belt spec	Plain 400/3 4+2
Drive drum dia.	200mm (8")
Tail drum dia.	200mm (8")
Motor	OMT400
Flow rate	50.6 Lpm (11.1 gpm)
Adjustable speed	YES
Maximum speed	126.5 rpm

#### **3 DECK AUXILLARY CONVEYOR**

Stockpile height - track model	4700mm (15.5')
Belt width	500mm (20")
Belt spec	Chevron - 400/3 6+1.5
Drive drum dia.	290mm (11.5")
Tail drum dia. (Spoked)	270mm (10.6")
Motor	OMT400
Flow rate	50.6 Lpm (11.1 gpm)
Adjustable speed	YES
Maximum speed	126.5 rpm



### **SCREENBOX**

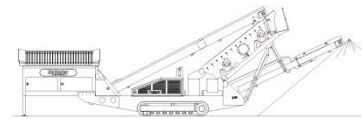
Dimensions - top deck	4270mm x 1524mm (14' x 5')
Dimensions - middle deck	4270mm x 1524mm (14' x 5')
Dimensions - bottom deck	3660mm x 1524mm (12' x 5')
Bearing type 3 Deck	NSK/RHP 22319 - 95mm bore
Screens - top deck	5' x 4' side tension - 3 off & 5' x 2' side tension - 1 off
Screens - middle deck	5' x 4' side tension - 3 off & 5' x 2' side tension - 1 off
Screens - bottom deck	5' x 6' end tension - 2 off
Tensioning - top deck	Quick release pin and wedge
Tensioning - middle deck	Quick release pin and wedge
Tensioning - bottom deck	Curved tension bar and adjuster
Screen angle	25 to 34 deg
Screen motor	DBH MCC2208 (58.9cc/rev)
Drive system	Direct drive with HRC180 coupling
Hydraulic flowrate	72.6 Lpm (19.2gpm)
Speed adjustable	YES - Pressure compensated FCV
Screen stroke adjustable	6 - 10mm maximum
Screen shaft speed	1130 - 950 rpm
Screen 'g' force	4.29 - 5.05

### **POWERUNIT AND HYDRAULICS**

Engine	CAT 4.4 (Tier III)
Engine power	100 HP
Engine speed	2200 rpm
Flywheel Pump 1	DBH 5033,5033
LH PTO Pump 2	DBH 5023,5023
RH PTO Pump 3	DBH 2SPA11
Total system flow	289 L (76.3 US Gpm)
Hydraulic tank capacity	630 L (166 US Gals)
Hydraulic tank ratio	2.18 : 1
Hydraulic Oil cooler	YES

### **ELECTRICS**

Emergency stops	6 off, 1 feeder, 2 powerunit RH&LH, 2 chassis front RH&LH, 1 Walkway
Chassis cabling	Armored cable
Start Siren	YES - 10 sec delay
Engine shutdowns:	Low oil pressure High water temp Air filter blockage (selectable) Fuel contamination Low hydraulic tank level
Engine room light	YES
Remote tipping grid	YES - 2 function timed
Radio control tracks	optional - Hetronic system
Pendant track control	YES - plugged in at feeder end



### **TRACKS**

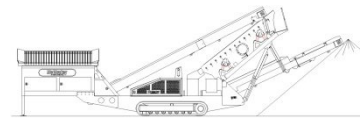
Width	500mm (19.7")
Length	2920mm (9' - 7") crs
Height	739mm (29.4")
Gearbox	Bonfiglioli 707
Ratio	122:1
Motor	Rexroth 63
Speed max	1.32 Kph (0.82 Mph)
Flow rate	72.6 Lpm (19.2 US gpm)
Dual speed	<b>TBC</b>
Attachment to chassis	Bolt On for quick change

### **RINSE KIT**

Main water supply pipe	150mm (6") diameter
Wash box lining	25mm (1") rubber wear lining
Wash box spray pipe	6 brass nozzles 200/80
Top deck spray pipes	6 off
Top deck spray nozzles	33 off 8mm Meister Uni-Duse adjustable
Bottom deck spray pipes	6 off
Bottom deck spray nozzles	33 off 8mm Meister Uni-Duse adjustable
Bottom deck Catchbox	6mm (1/4") rubber lined
Bottom deck exit	255mm (10") diameter flange 2 off

### **WHEELS**

Width	2900mm (9' - 6")
Axle centers	1360mm (4' - 6")
Wheels	235/75/R17.5 dual
Axles	2 off
Brakes	YES
Spring suspension	YES
Mudguards	YES
Handbrake	OPTION
ABS	OPTION

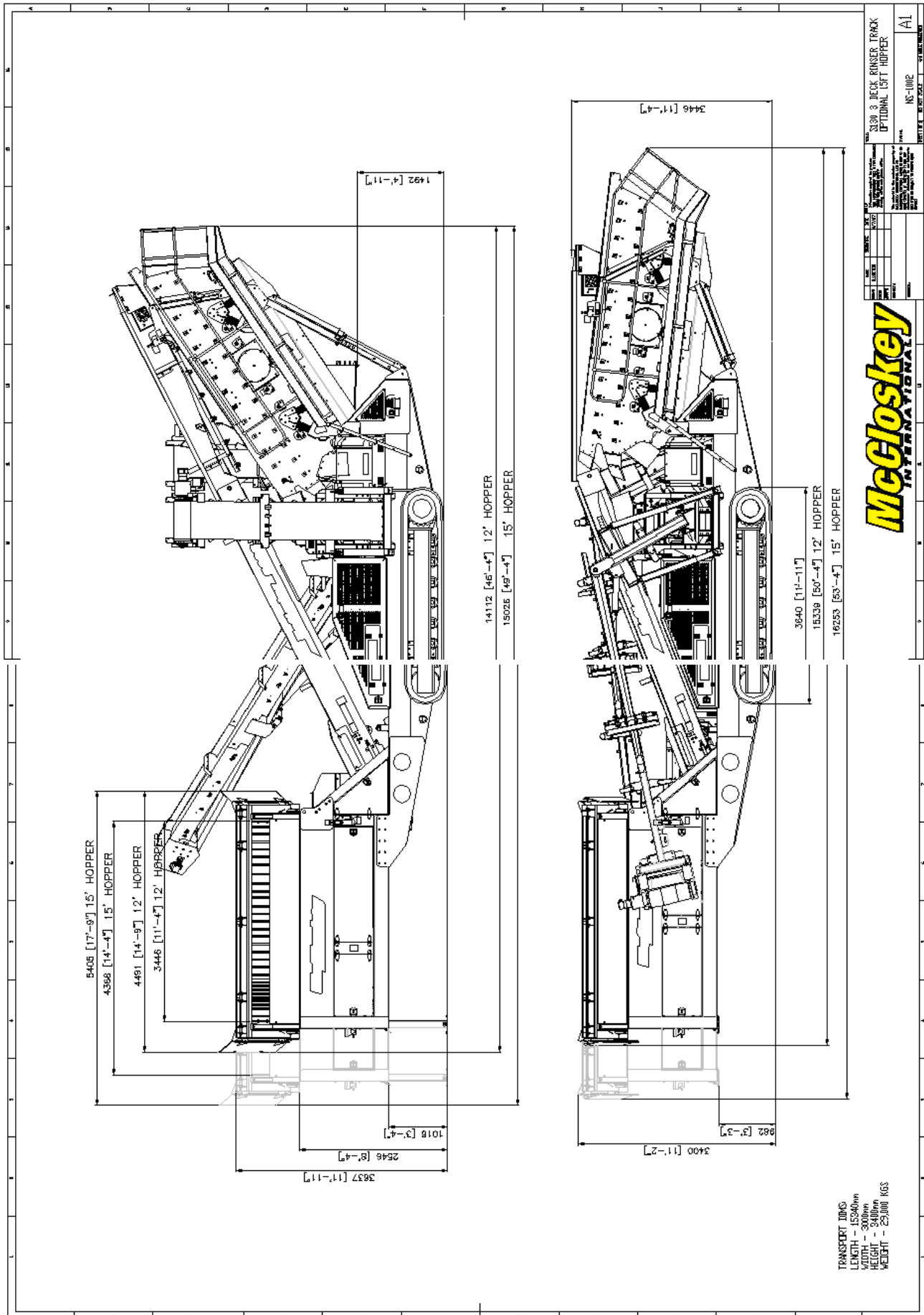
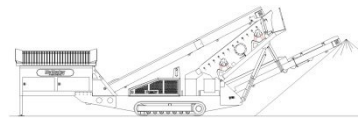


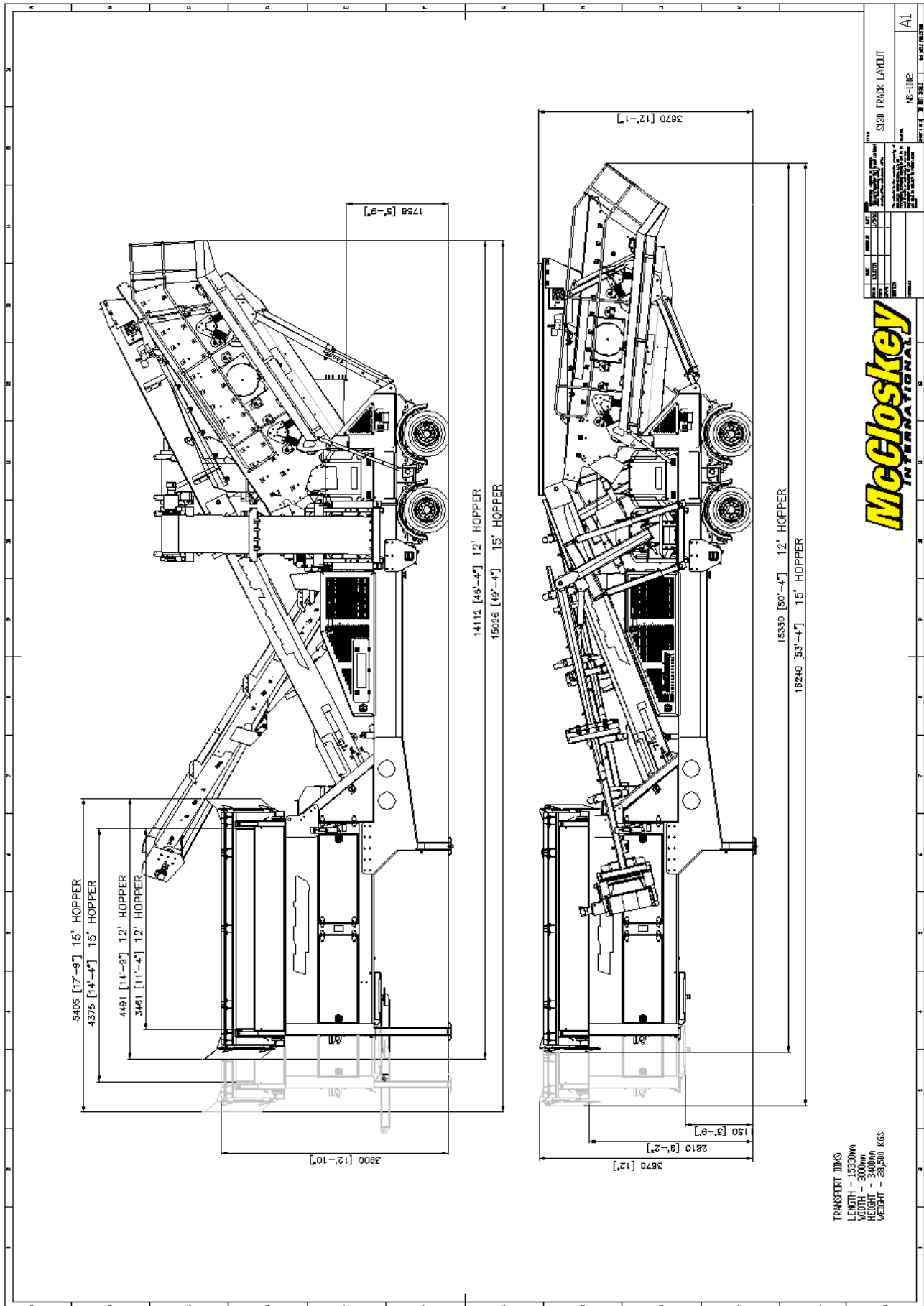
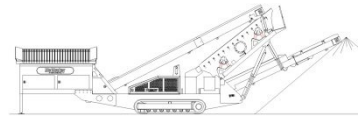
### **OPTIONS**

Single or double deck live head  
Roll-in bogie system  
Single shaft shredder  
2 Deck Rinsers  
Crusher chute (available with 15ft hopper only)  
Radio remote control

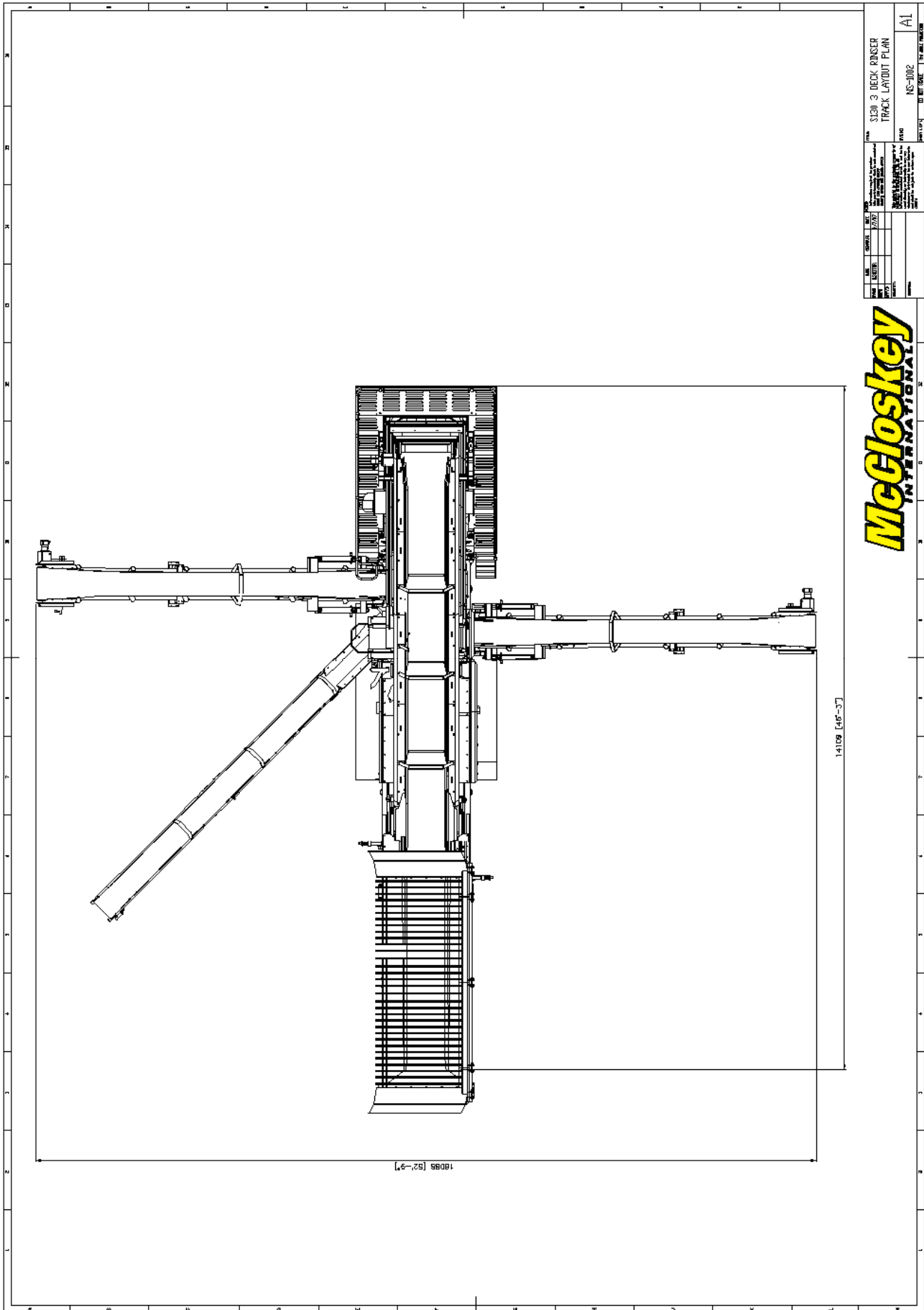
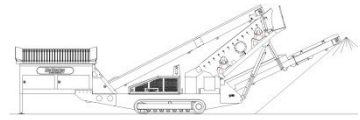
### **SAFETY FEATURES**

External belt alignment points  
External grease points  
Engine safety shutdown systems  
Full safety guarding for nip points









**McCloskey**  
INTERNATIONAL

REV	DATE	BY	CHKD	APPD	DESCRIPTION
1	04/11/13	WWS			ISSUED FOR CONSTRUCTION
2	04/11/13	WWS			REVISIONS
3	04/11/13	WWS			REVISIONS
4	04/11/13	WWS			REVISIONS
5	04/11/13	WWS			REVISIONS
6	04/11/13	WWS			REVISIONS
7	04/11/13	WWS			REVISIONS
8	04/11/13	WWS			REVISIONS
9	04/11/13	WWS			REVISIONS
10	04/11/13	WWS			REVISIONS
11	04/11/13	WWS			REVISIONS
12	04/11/13	WWS			REVISIONS
13	04/11/13	WWS			REVISIONS
14	04/11/13	WWS			REVISIONS
15	04/11/13	WWS			REVISIONS
16	04/11/13	WWS			REVISIONS
17	04/11/13	WWS			REVISIONS
18	04/11/13	WWS			REVISIONS
19	04/11/13	WWS			REVISIONS
20	04/11/13	WWS			REVISIONS
21	04/11/13	WWS			REVISIONS
22	04/11/13	WWS			REVISIONS
23	04/11/13	WWS			REVISIONS
24	04/11/13	WWS			REVISIONS
25	04/11/13	WWS			REVISIONS
26	04/11/13	WWS			REVISIONS
27	04/11/13	WWS			REVISIONS
28	04/11/13	WWS			REVISIONS
29	04/11/13	WWS			REVISIONS
30	04/11/13	WWS			REVISIONS
31	04/11/13	WWS			REVISIONS
32	04/11/13	WWS			REVISIONS
33	04/11/13	WWS			REVISIONS
34	04/11/13	WWS			REVISIONS
35	04/11/13	WWS			REVISIONS
36	04/11/13	WWS			REVISIONS
37	04/11/13	WWS			REVISIONS
38	04/11/13	WWS			REVISIONS
39	04/11/13	WWS			REVISIONS
40	04/11/13	WWS			REVISIONS
41	04/11/13	WWS			REVISIONS
42	04/11/13	WWS			REVISIONS
43	04/11/13	WWS			REVISIONS
44	04/11/13	WWS			REVISIONS
45	04/11/13	WWS			REVISIONS
46	04/11/13	WWS			REVISIONS
47	04/11/13	WWS			REVISIONS
48	04/11/13	WWS			REVISIONS
49	04/11/13	WWS			REVISIONS
50	04/11/13	WWS			REVISIONS
51	04/11/13	WWS			REVISIONS
52	04/11/13	WWS			REVISIONS
53	04/11/13	WWS			REVISIONS
54	04/11/13	WWS			REVISIONS
55	04/11/13	WWS			REVISIONS
56	04/11/13	WWS			REVISIONS
57	04/11/13	WWS			REVISIONS
58	04/11/13	WWS			REVISIONS
59	04/11/13	WWS			REVISIONS
60	04/11/13	WWS			REVISIONS
61	04/11/13	WWS			REVISIONS
62	04/11/13	WWS			REVISIONS
63	04/11/13	WWS			REVISIONS
64	04/11/13	WWS			REVISIONS
65	04/11/13	WWS			REVISIONS
66	04/11/13	WWS			REVISIONS
67	04/11/13	WWS			REVISIONS
68	04/11/13	WWS			REVISIONS
69	04/11/13	WWS			REVISIONS
70	04/11/13	WWS			REVISIONS
71	04/11/13	WWS			REVISIONS
72	04/11/13	WWS			REVISIONS
73	04/11/13	WWS			REVISIONS
74	04/11/13	WWS			REVISIONS
75	04/11/13	WWS			REVISIONS
76	04/11/13	WWS			REVISIONS
77	04/11/13	WWS			REVISIONS
78	04/11/13	WWS			REVISIONS
79	04/11/13	WWS			REVISIONS
80	04/11/13	WWS			REVISIONS
81	04/11/13	WWS			REVISIONS
82	04/11/13	WWS			REVISIONS
83	04/11/13	WWS			REVISIONS
84	04/11/13	WWS			REVISIONS
85	04/11/13	WWS			REVISIONS
86	04/11/13	WWS			REVISIONS
87	04/11/13	WWS			REVISIONS
88	04/11/13	WWS			REVISIONS
89	04/11/13	WWS			REVISIONS
90	04/11/13	WWS			REVISIONS
91	04/11/13	WWS			REVISIONS
92	04/11/13	WWS			REVISIONS
93	04/11/13	WWS			REVISIONS
94	04/11/13	WWS			REVISIONS
95	04/11/13	WWS			REVISIONS
96	04/11/13	WWS			REVISIONS
97	04/11/13	WWS			REVISIONS
98	04/11/13	WWS			REVISIONS
99	04/11/13	WWS			REVISIONS
100	04/11/13	WWS			REVISIONS