



CONNECTING WISCONSIN

I-41 Project

WIS 96 (Wisconsin Ave) to County F (Scheuring Rd)
Outagamie & Brown Counties

Public Involvement Meeting

Wednesday, May 13, 2020

Presentation Outline

- Project team
- I-41 Project overview
- Project purpose and need
- Alternatives
- Environmental analysis
- Project schedule
- Next steps

Project Team

- Will Dorsey, Northeast Region Director
- Colleen Harris, Northeast Region Deputy Director
- Tom Buchholz, Project Development Chief
- Chad DeGrave, Project Supervisor
- Scott Ebel, Design Project Manager
- Bryan Lipke, Planning Project Manager
- Melissa (Missy) Kok, Communications Manager

Questions and Comments

- Submit questions during the presentation through the YouTube comment section
- Comment forms
 - Available on the project website
 - submit via email
DOTDTSNERI41@dot.wi.gov
 - Mail to WisDOT NE Region
944 Vanderperren Way
Green Bay, WI 54304

[illegible]

wisconsindot.gov/I41project



Project Overview

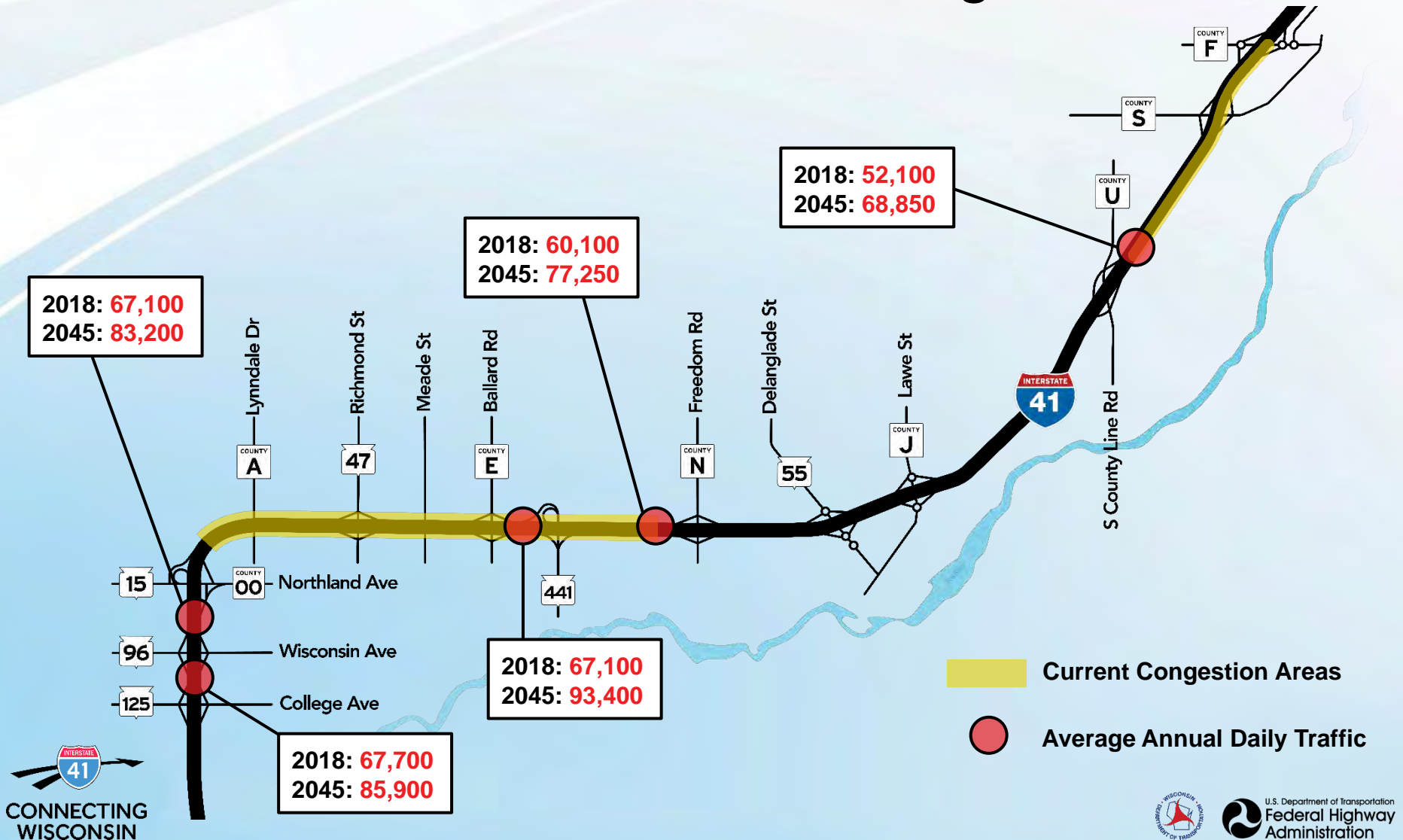
I-41 Project Limits

- 23-mile corridor
- WIS 96 (Wisconsin Avenue) to County F (Scheuring Road)



Purpose and Need

Traffic Volumes and Congestion



Purpose and Need

Crash Rates vs Statewide Average



Purpose and Need

Safety

- Frequent crashes create unexpected delays
- Unexpected delays increase travel times through the corridor
- Travel time reliability is decreased on both I-41 and the local roadway system



Purpose and Need

Roadway Condition



Questions and Comments

- Submit questions during the presentation through the YouTube comment section
- Comment forms
 - Available on the project website
 - submit via email
DOTDTSDNERI41@dot.wi.gov
 - Mail to WisDOT NE Region
944 Vanderperren Way
Green Bay, WI 54304

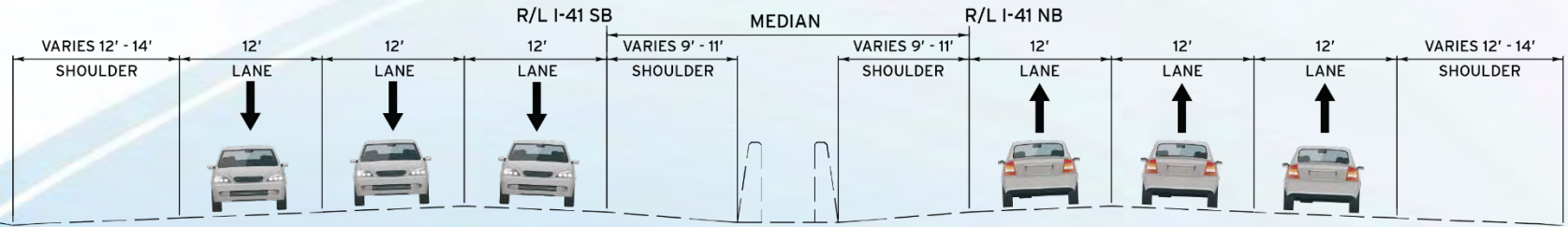
A screenshot of a "Comment Form" for the I-41 Project. The form includes fields for Name (please print), Address, and E-mail Address, each followed by a line for input. There is also a "Date:" field. Below these is a "Comments:" section with multiple horizontal lines for text entry. The form is titled "Comment Form" and includes project details: "I-41 Project", "WIS 90 (Wisconsin Avenue) to County F (Schrading Road)", "Online Public Involvement Meeting", and "May 13, 2020". It also provides an email address for comments: "DOTDTSDNERI41@dot.wi.gov by June 3, 2020". The "CONNECTING WISCONSIN" logo is in the top right corner.

Alternatives

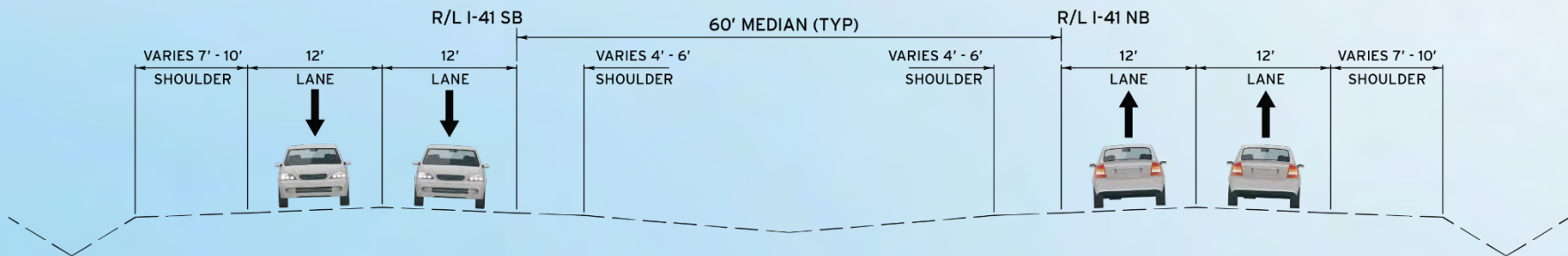
- No build
- 4-lanes
- 6-lanes
- Roadway, bridges and interchanges to current standards
- Other project elements
 - Changes to the Interstate System
 - State Patrol Weigh Station improvement
 - Brown County South Bridge Connector

Alternatives

Existing I-41 Typical Sections



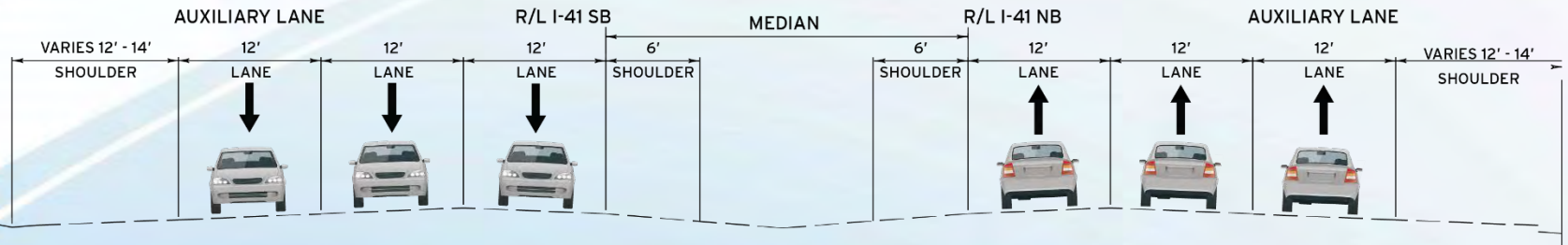
EXISTING TYPICAL SECTION - I-41
WIS 96 TO WIS 15



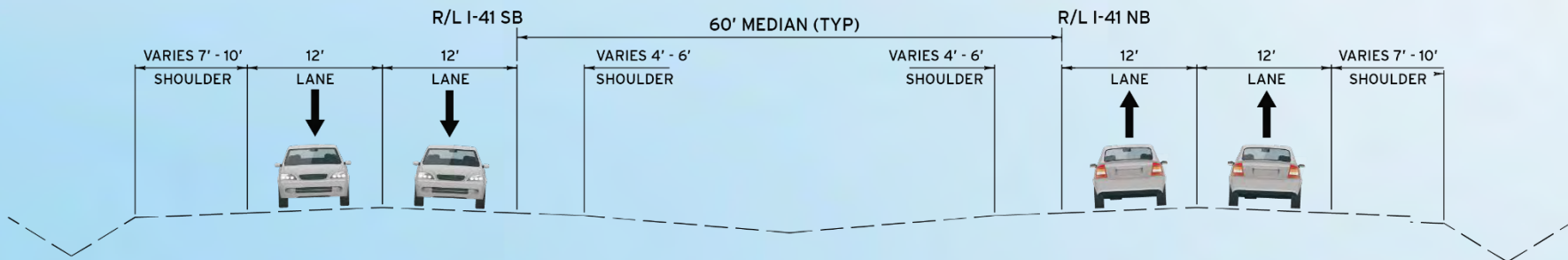
EXISTING TYPICAL SECTION - I-41
WIS 15 TO COUNTY E

Alternatives

Existing I-41 Typical Sections



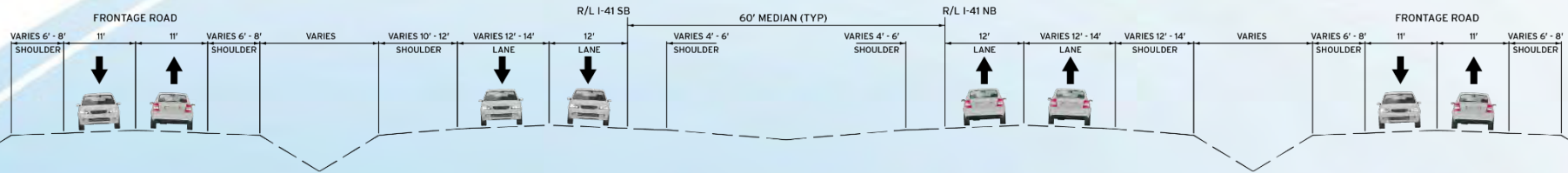
EXISTING TYPICAL SECTION - I-41
COUNTY E TO WIS 441



EXISTING TYPICAL SECTION - I-41
WIS 441 TO COUNTY J

Alternatives

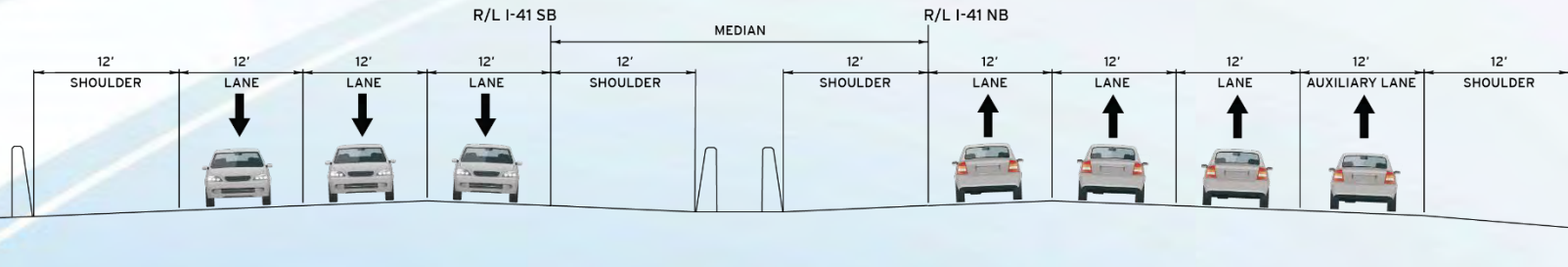
Existing I-41 Typical Sections



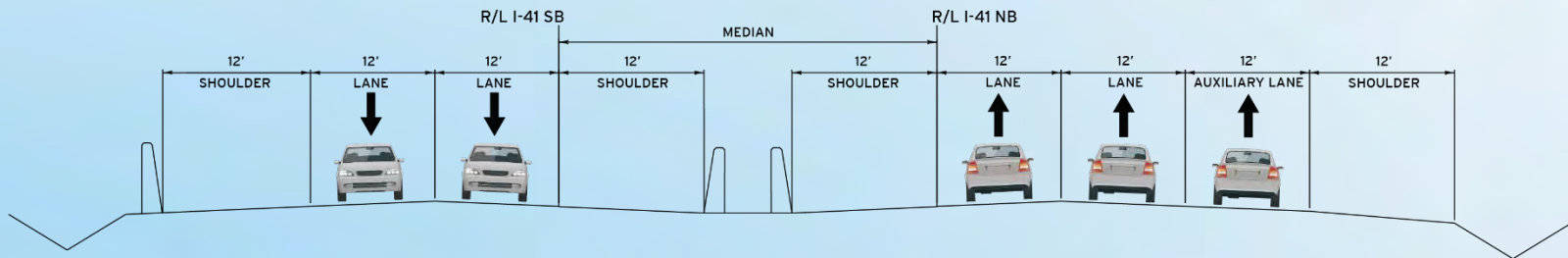
EXISTING TYPICAL SECTION - I-41
COUNTY J TO COUNTY F

Alternatives

I-41 Typical Sections



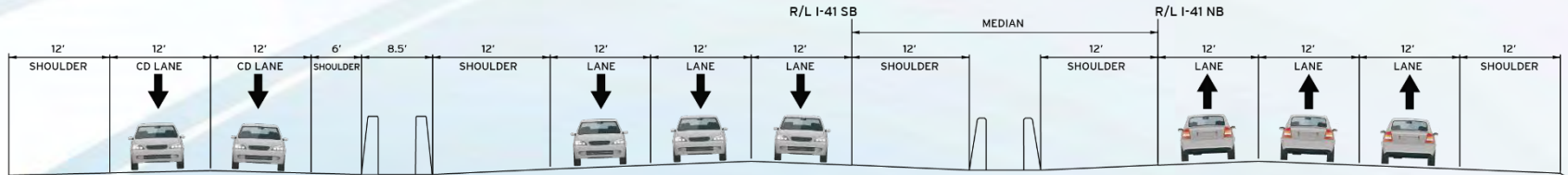
SIX LANE TYPICAL SECTION - I-41
SHOWN WITH AUXILIARY LANE



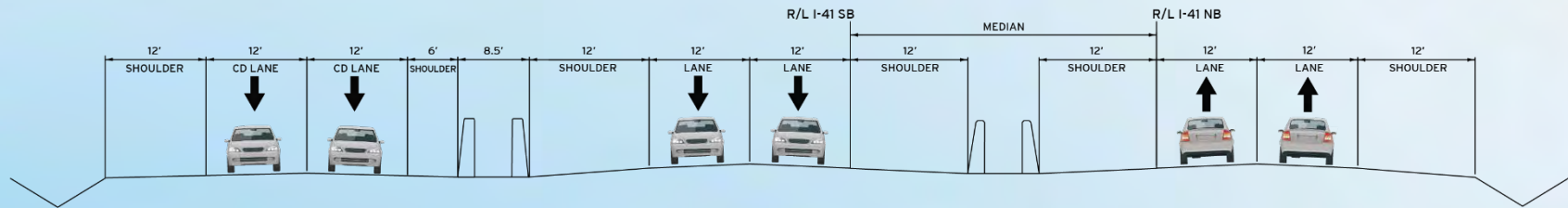
FOUR LANE TYPICAL SECTION - I-41
SHOWN WITH AUXILIARY LANE
(MATCHES EXISTING TYPICAL SECTION NORTH OF WIS 15)

Alternatives

I-41 Typical Sections



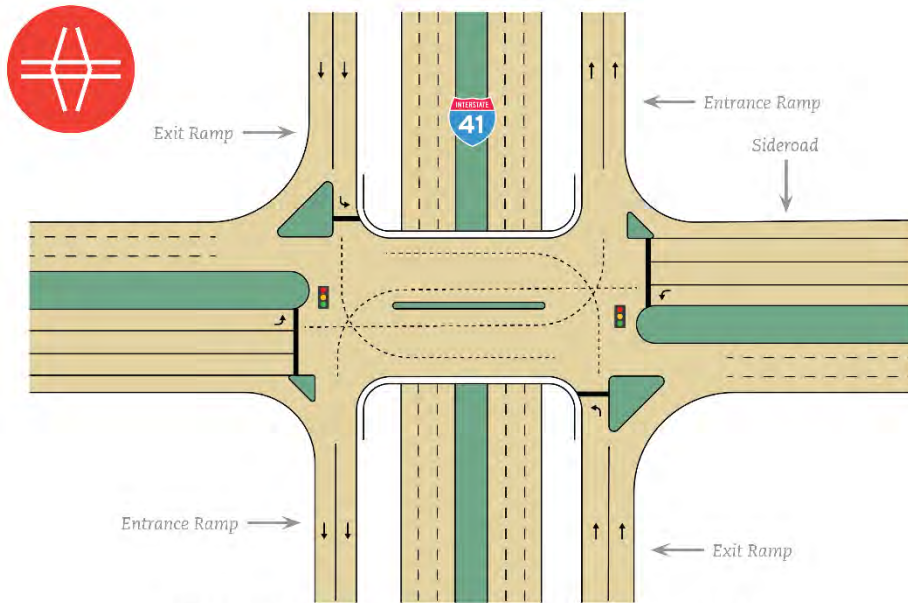
SIX LANE TYPICAL SECTION - I-41
SHOWN WITH COLLECTOR-DISTRIBUTOR ROAD



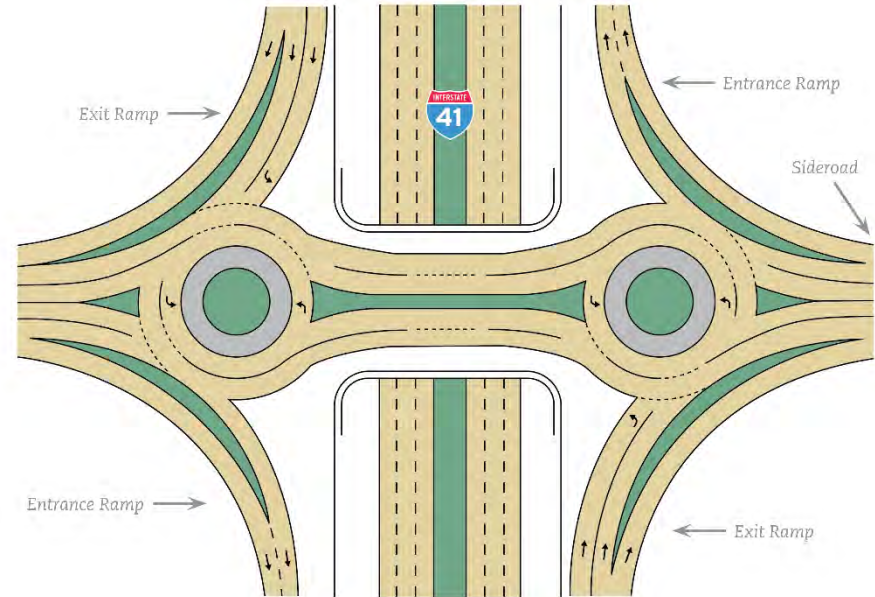
FOUR LANE TYPICAL SECTION - I-41
SHOWN WITH COLLECTOR-DISTRIBUTOR ROAD

Alternatives

Diamond Interchange*



WITH STOP SIGNS OR TRAFFIC SIGNALS

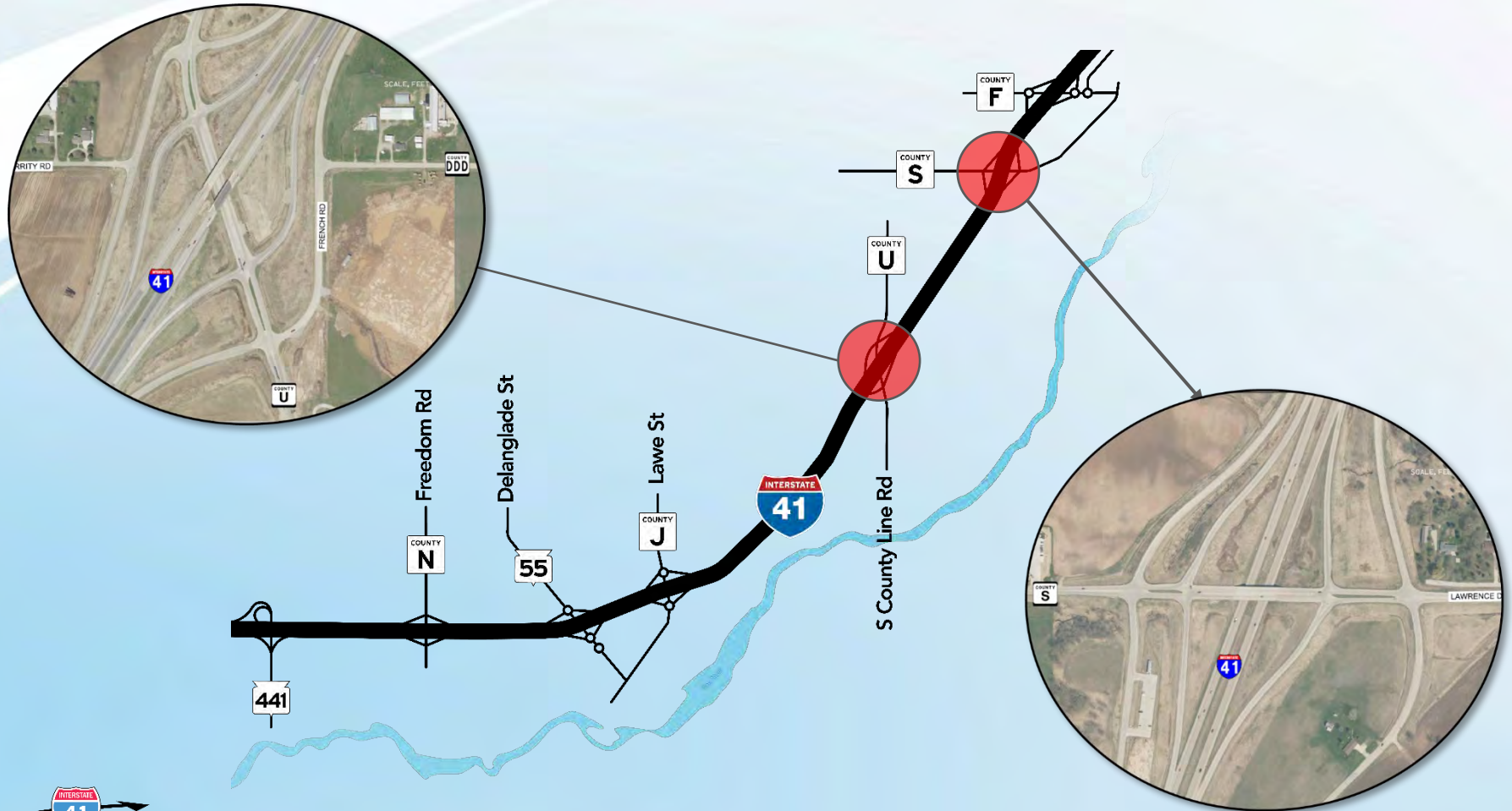


WITH ROUNDABOUTS

* A tight diamond has the same form as the conventional diamond, but with a closer spacing of ramps intersections.

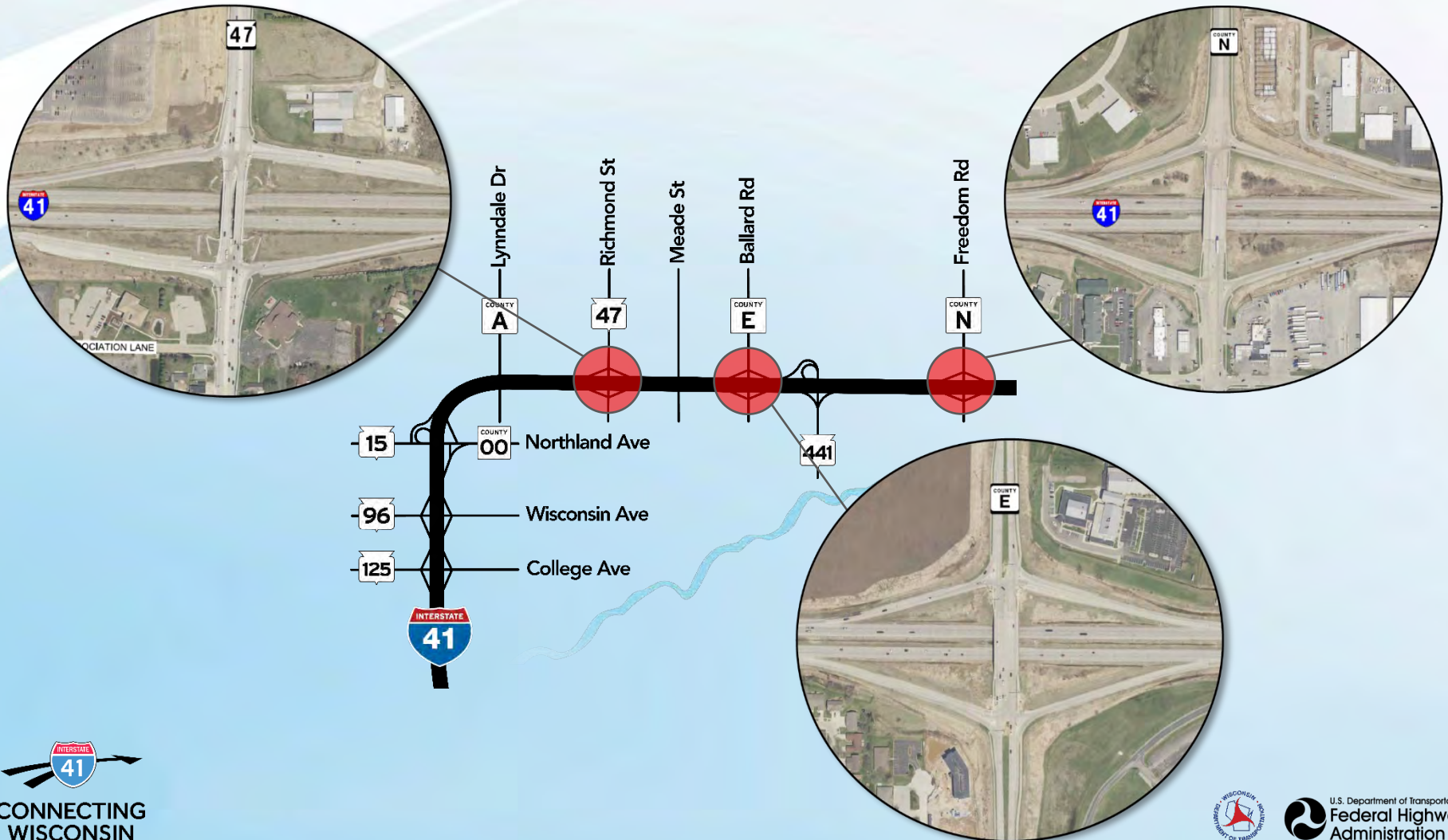
Alternatives

Diamond Interchange Corridor Examples



Alternatives

Tight Diamond Interchange Corridor Examples



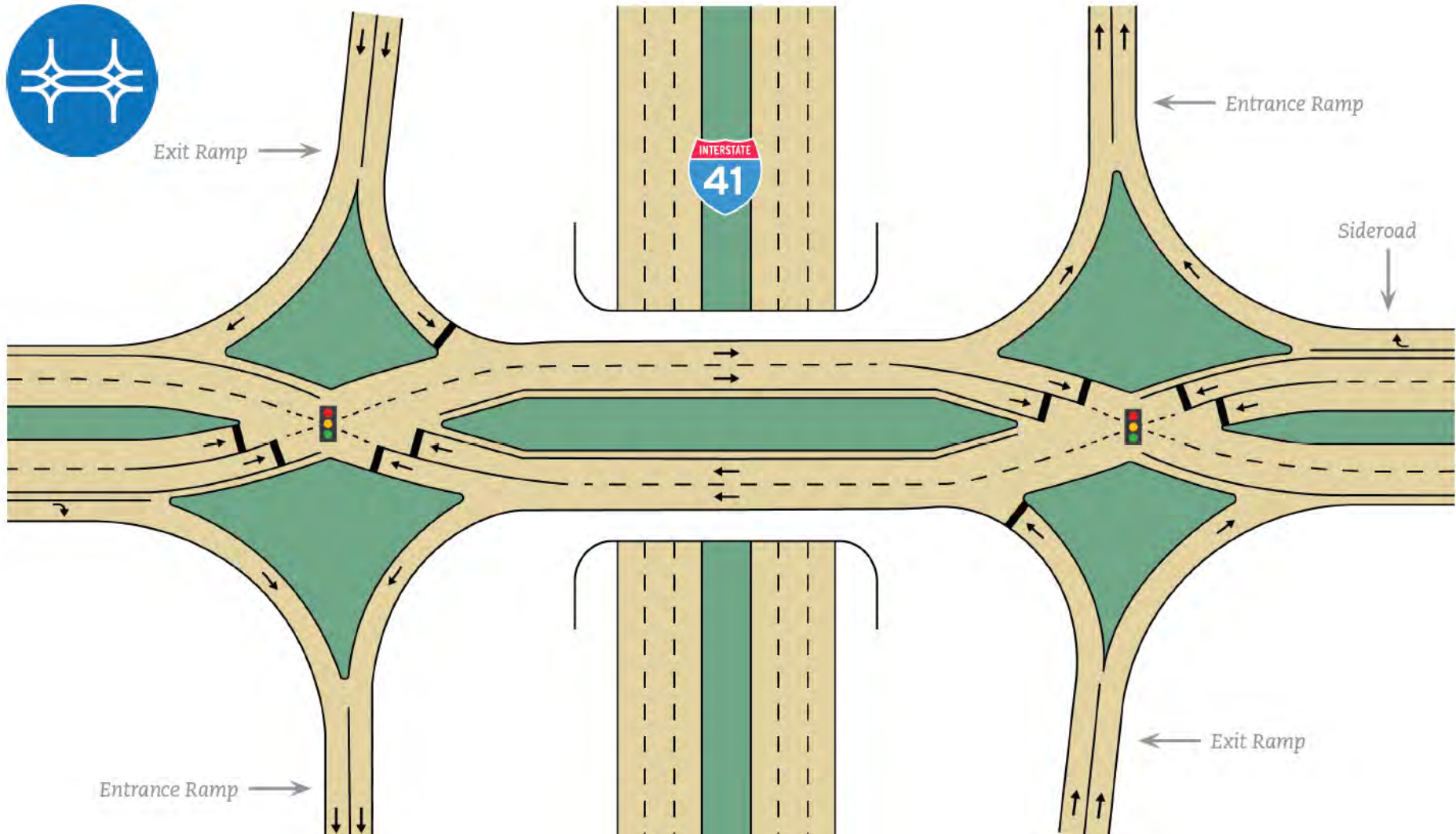
Alternatives

Diamond Interchange with RAB Corridor Example



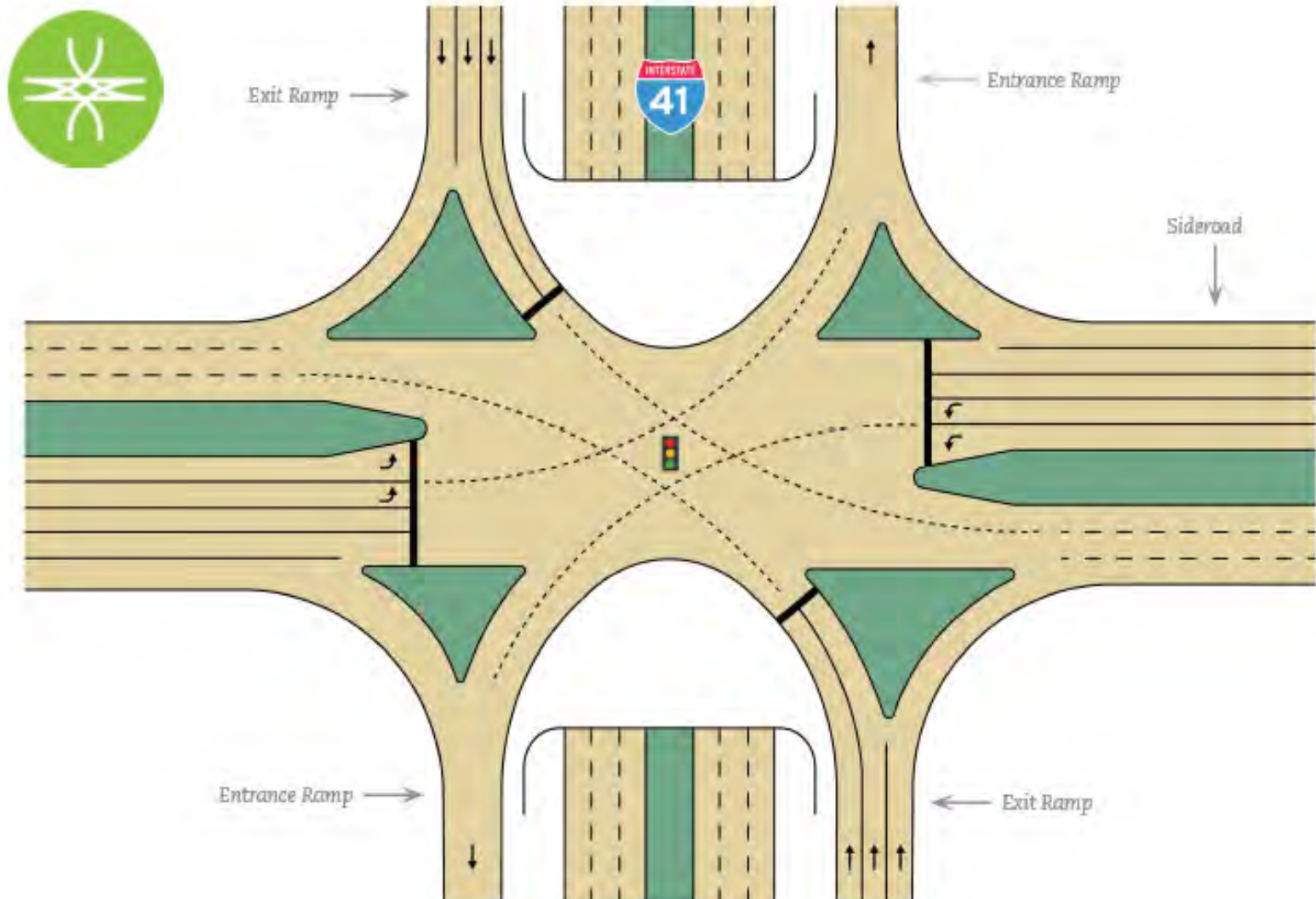
Alternatives

Diverging Diamond Interchange (DDI)



Alternatives

Single Point Urban Interchange (SPUI)



Alternatives

WIS 441 System Interchange



Alternatives

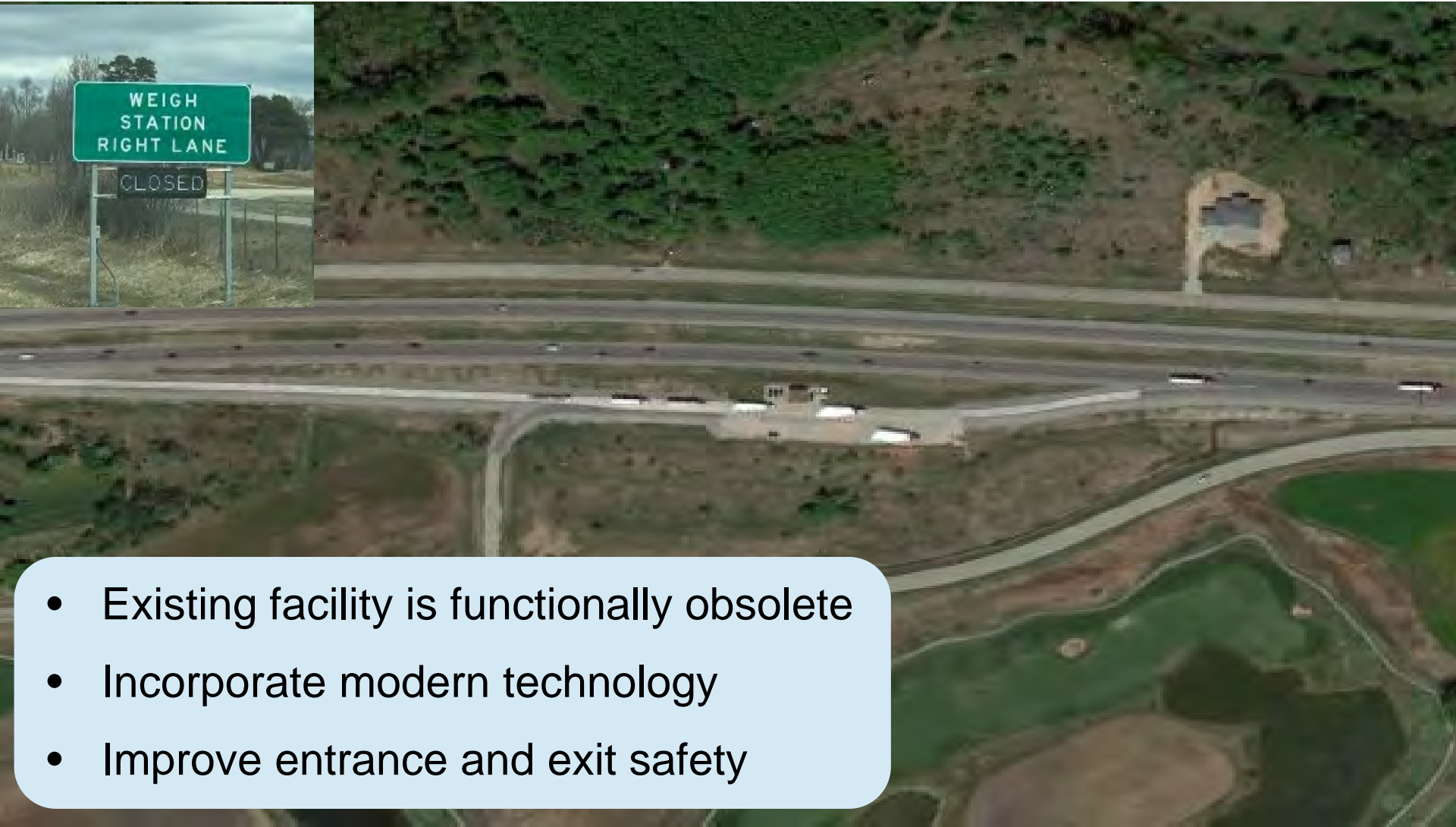
Changes to Interstate Highway System

- New or revised access to the Interstate requires FHWA approval
- Protects the operational safety and capacity of the system
- Public involvement and approved environmental document required



Alternatives

State Patrol Weigh Station



- Existing facility is functionally obsolete
- Incorporate modern technology
- Improve entrance and exit safety

Alternatives

Brown County South Bridge Connector

- Tier 1 EIS being prepared
- Two corridor alternatives remain under detailed study
- Schedule
 - Draft EIS: June 2020
 - Public Hearing: July 2020
 - Final EIS/Record of Decision expected: October 2020
- Contact
 - Cole Runge, Interim Planning Director Brown County (920) 448-6480



Cole.Runge@browncountywi.gov

Environmental Analysis

Environmental Assessment

- Purpose and need
- Range of alternatives
- Impacted environment
 - Air Quality
 - Agriculture
 - Business and Economics
 - Noise
 - Groundwater
 - Floodplains
 - Historic Properties
 - Stormwater
 - Surface water
 - Threatened/Endangered and protected resources
 - Wetlands

Environmental Analysis

Noise

- Identify noise impacts
 - Field measurements
 - Computer modeling
- Examine potential mitigation
 - Changes to roadway design
 - Noise barriers
- Incorporate reasonable and feasible mitigation
 - Must be approved by a majority adjacent and benefited landowners and residents
- Barrier design



Project Schedule

Key Milestones

- Environmental Document
 - Public involvement meetings: spring and fall 2020
 - Environmental Assessment complete: April 2021
 - Public hearing: May 2021
 - Final environmental approval: Nov 2021
- Final engineering: 2022-2024
- Right of way acquisition: 2023-2024
- Construction: TBD

Project Schedule

Task Item	2020												2021											
	J	F	M	A	M	J	J	A	S	O	N	D	J	F	M	A	M	J	J	A	S	O	N	D
Environmental																								
Agency Coordination																								
Traffic Analysis																								
Alternatives Development/Screening																								
Preliminary Design																								
Public Involvement																								

MEETING • MEETING •

HEARING •

Initiation of Environmental Study: Dec 2019
Final Design: 2022-2024

Real Estate Acquisition: 2023-2024
Construction: To Be Determined

Next Steps

Public outreach

- Establish trust and credibility within the community
- Be the first and best source of information about the project
- Seek public input at project milestone



Next Steps

Business Outreach

- Coordinate with businesses along corridor
- Provide businesses with firsthand information at project milestones



Next Steps

WisDOT will keep you informed

- Project website
 - Watch a recorded copy of tonight's YouTube live presentation
 - View meeting displays
 - Comment forms
 - Upcoming public meeting announcements
- Join project email list
 - Sign-up on the website
 - Send email to project staff

Questions and Comments

- Submit questions during the presentation through the YouTube comment section
- Comment forms
 - Available on the project website
 - submit via email
DOTDTSDNERI41@dot.wi.gov
 - Mail to WisDOT NE Region
944 Vanderperren Way
Green Bay, WI 54304

A screenshot of a "Comment Form" for the I-41 Project. The form includes fields for Name (please print), Address, and E-mail Address, each followed by a line for input. There is also a "Date:" field. Below these is a "Comments:" section with multiple horizontal lines for text entry. The form is titled "Comment Form" and includes project details: "I-41 Project", "WIS 90 (Wisconsin Avenue) to County F (Schrading Road)", "Online Public Involvement Meeting", and "May 13, 2020". It also provides an email address for comments: "DOTDTSDNERI41@dot.wi.gov by June 3, 2020". The logo "CONNECTING WISCONSIN" is in the top right corner.

Contacts

- Melissa (Missy) Kok, Communication Manager
 - (920) 492-5743
 - Melissa2.Kok@dot.wi.gov
- Scott Ebel, P.E., Project Manager
 - (920) 360-2225
 - Scott.Ebel@dot.wi.gov
- Both can be also be reached by mail at:
 - WisDOT Northeast Region
944 Vanderperren Way
Green Bay, WI 54304

Current I-41 Construction

Between WIS 15 and WIS 47



- Construction: April 11 to July 1, 2020
- Replace bridge railings
 - Gillette Street and Railroad Crossing
- Traffic Impacts
 - NB and SB I-41 reduced to single lane
 - Holiday restrictions