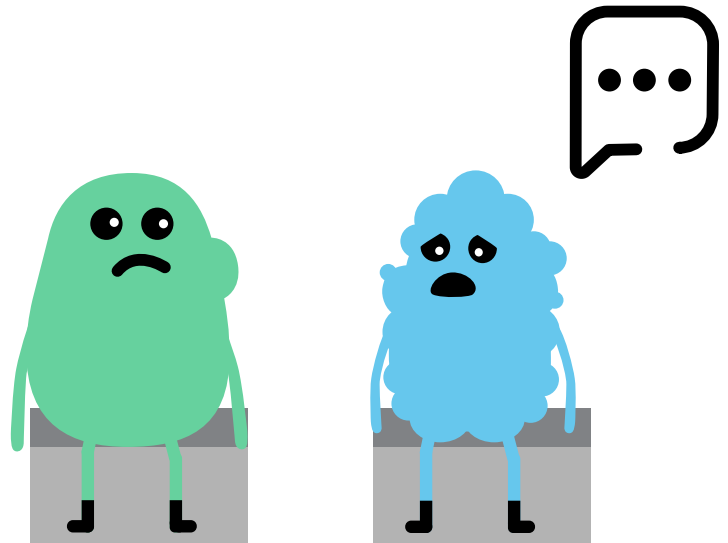


Privacy and Confidentiality.

01

Scenario

A peer comes to you with personal and sensitive information.



Alcohol
and Drug
Foundation



Australian Government

Local Drug Action Team Program

Peer Support:
Supporting peers

Instructions...

In small groups, discuss how you would maintain confidentiality, and why it's important. What would be some exceptions to maintaining confidentiality? What steps would you take if they told you about a dangerous or harmful situation at home?

Key considerations when practising your scenario...

- Reports of abuse, neglect or harassment **must** be reported.
- Your Program Coordinator, and program policies and procedures, are there to support you.



Alcohol
and Drug
Foundation



Australian Government

Local Drug Action Team Program

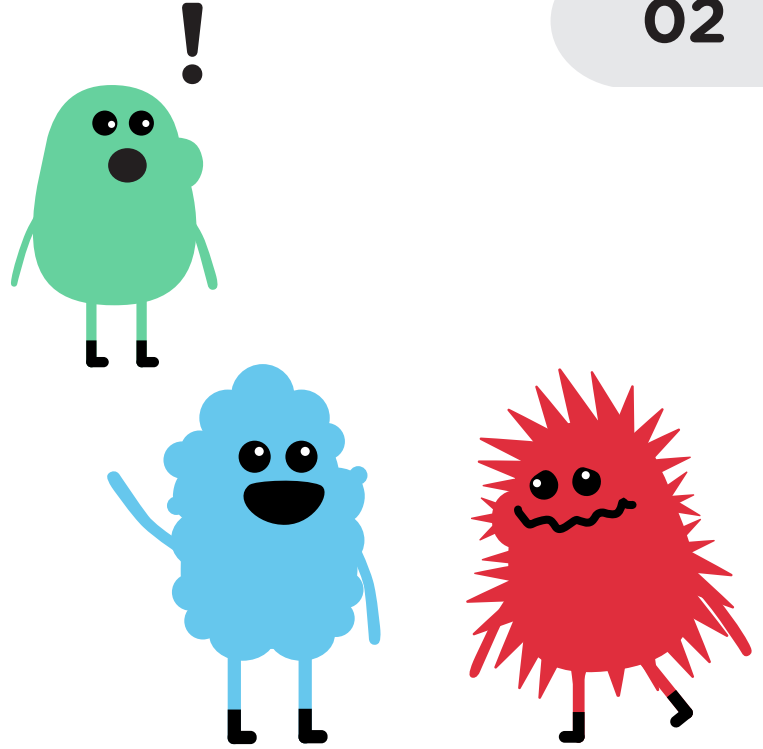
Peer Support:
Supporting peers

Duty of Care.

02

Scenario

You see a peer doing something that puts themselves or others at risk of harm.



Alcohol
and Drug
Foundation



Local Drug Action Team Program

Peer Support:
Supporting peers

Instructions...

In small groups, discuss your understanding of Duty of Care, whose responsibility it is, and how you can ensure a Duty of Care to fellow participants.

Key considerations when practising your scenario...

- Duty of Care is the responsibility of everyone, especially Peer Leaders.
- Your Program Coordinator, and program policies and procedures, are there to support you.



Alcohol
and Drug
Foundation



Local Drug Action Team Program

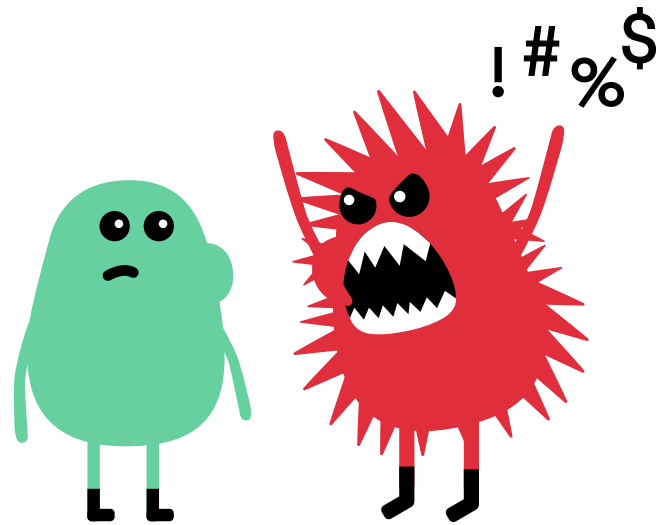
Peer Support:
Supporting peers

Identifying Warning Signs.

03

Instructions...

- In small groups, discuss possible warning signs that one of your peers might be drinking alcohol or using drugs, and might need support.
- Explore what you would do if you see these warning signs.



Alcohol
and Drug
Foundation



Local Drug Action Team Program

Peer Support:
Supporting peers

Key considerations when practising your scenario...

- Warning signs may include:
 - neglecting responsibilities
 - disengagement from normal activities
 - friendship/relationship breakdowns
 - criminal or risky behaviours.
- Your Program Coordinator, and program policies and procedures, are there to support you.



Alcohol
and Drug
Foundation



Local Drug Action Team Program

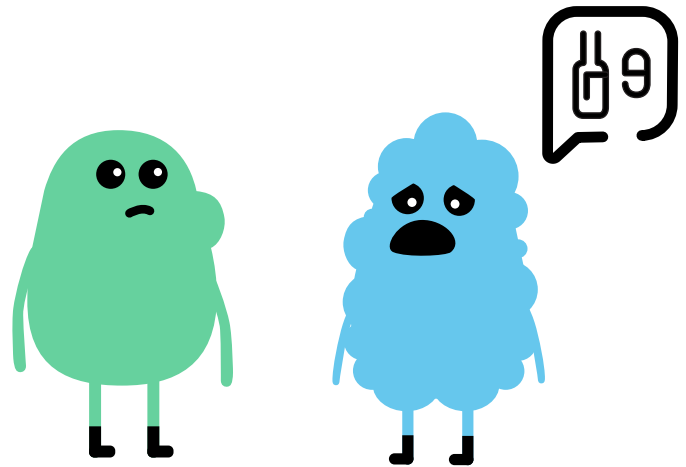
Peer Support:
Supporting peers

Seeking Support.

04

Scenario

A peer tells you they have been drinking alcohol or using drugs, and they feel it's getting out of control.



Alcohol
and Drug
Foundation



Australian Government

Local Drug Action Team Program

**Peer Support:
Supporting peers**

Instructions...

In small groups, discuss how you can support this person in getting help. This could include referring them to support services, directing them to relevant information, allowing them to talk to you, and protecting their privacy.

Key considerations when practising your scenario...

- Make sure the person feels safe and supported, and their safety and wellbeing are prioritised.
- Your program policies and procedures have a list of support services and evidence-based information sources.
- Make sure you maintain privacy, unless there's an immediate threat or mandatory reporting is required.
- Your Program Coordinator, and program policies and procedures, are there to support you.



Alcohol
and Drug
Foundation



Australian Government

Local Drug Action Team Program

**Peer Support:
Supporting peers**