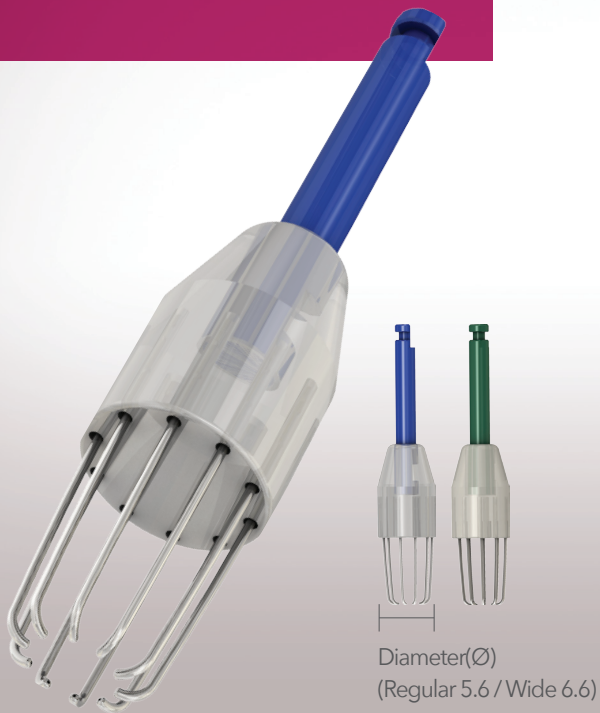
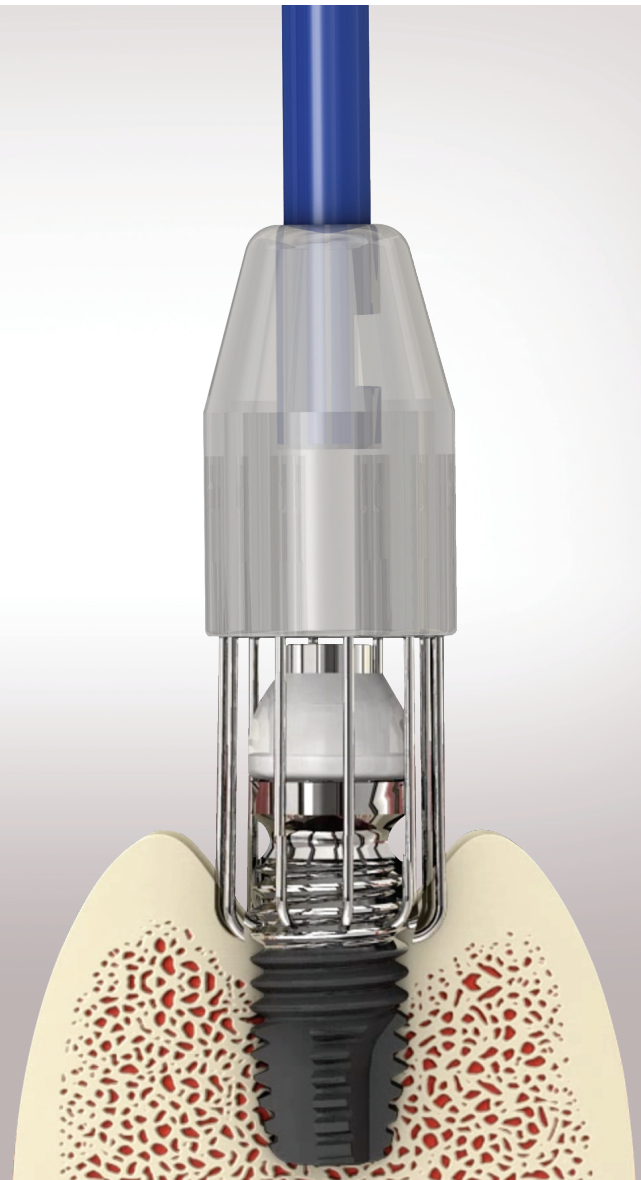


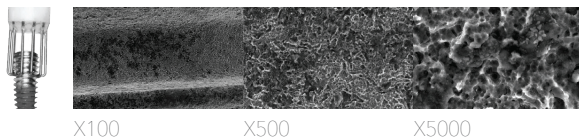
R-Brush



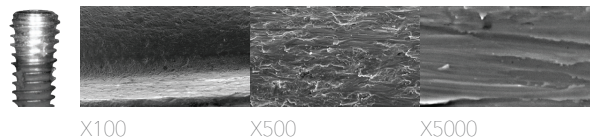
Easily Remove the Infected Implant Surface with Round Brush!
Precise Cleansing for Peri-implantitis Treatment



Before R-Brush



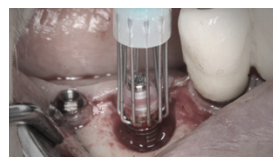
After R-Brush



Bone loss has occurred



After removing prosthesis and abutment, connect cover cap to the fixture



Along the exposed implant surface, cleanse with vertically reciprocating motion.



Use Ibrush where R-Brush cannot be approached and suture after conducting GBR