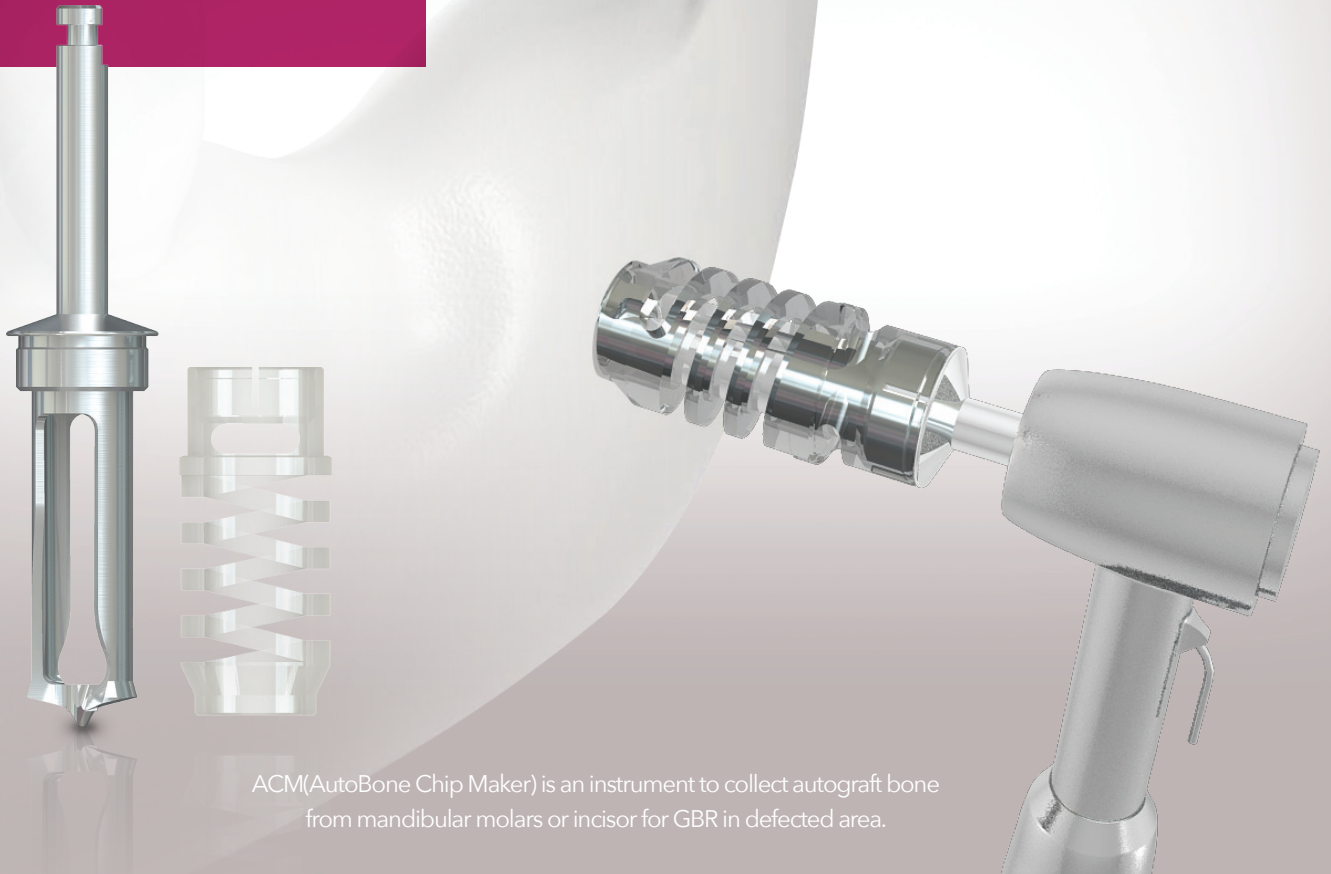
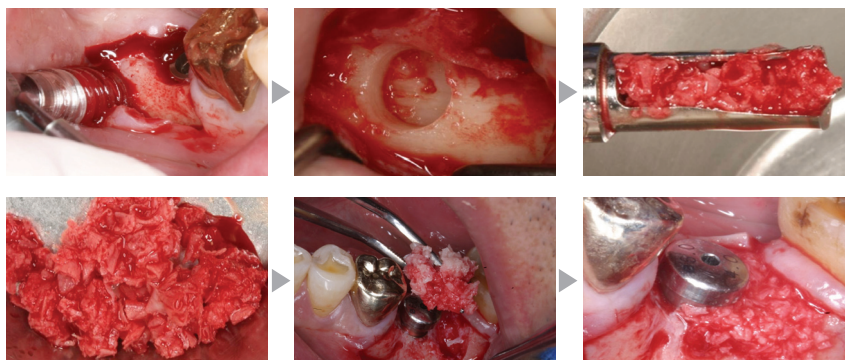
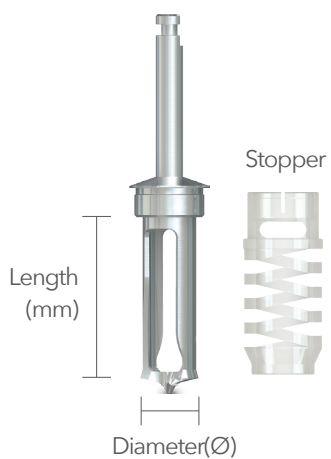


ACM



ACM(AutoBone Chip Maker) is an instrument to collect autograft bone from mandibular molars or incisor for GBR in defected area.



Collect the Autograft bone to locate the drill on the surface of operation area by pressing it slightly with saline irrigation. (Drilling Speed : 300rpm)
If use of ACM has accstomed, collect the bone in 80rpm condition without the irrigation.